

learning the whole of love

baritone voice, trumpet, trombone, bass clarinet

eva-maria houben

© **edition wandelweiser 2024**

catalogue number ew16.503

learning the whole of love

for baritone voice, trumpet, trombone, bass clarinet

eva-maria houben

2024

For the ensemble **loadbang**.

We learned the Whole of Love –
The Alphabet – the Words –
A Chapter – then the mighty Book –
Then – Revelation closed –

But in Each Other's eyes
An Ignorance beheld –
Diviner than the Childhood's –
And each to each, a Child –

Attempted to expound
What Neither – understood –
Alas, that Wisdom is so large –
And Truth – so manifold!

(Emily Dickinson)

everything is given.

1

“we learned the whole of love”
(followed by) →

echo space **I**

2

“but in each other’s eyes”
→

echo space **II**

3

“attempted to expound”
→

echo space **III**

pages 1, 3, 5

trumpet, trombone, bass clarinet

long fermata: opening the space for the voice, referring to the given partial row on B flat.

choosing one, two or some more sounds (rather long) of this row within the given margins of the instrument in each case.

anticipating the voice – then:

echoing –

softly touching the voice

shining

questioning

wondering about yourself

with great kindness

intimately

lightly

extremely gentle

with timid devotion

enigmatic

in deepest silence

with simplicity

with sweetness

the deviations of the partials from the equal temperament scale may be approximately achieved in so far as it is possible and comfortable.

echo spaces I, II, III – pages 2, 4, 6

all

sharing the space for reverberations, resonances, memories.

some

sounds

- tones
- noises
- words

echoes emerging.

9 10 11 12

7.: - 31ct + 4ct - 14ct - 49ct

5.: - 14ct

Detailed description: This system contains measures 9 through 12. The treble clef staff has a key signature of two flats (Bb, Eb). Measure 9 starts with a whole note chord of Bb2, Eb3, and Gb3, with a '- 31ct' adjustment. Measure 10 has a whole note Eb3 with a '+ 4ct' adjustment. Measure 11 has a whole note Gb3 with a '- 14ct' adjustment. Measure 12 has a whole note Bb3 with a '- 49ct' adjustment. The bass clef staff has a key signature of two flats and contains a whole note chord of Bb1, Eb2, and Gb2 in measure 9, with a '- 14ct' adjustment. Below the bass staff, the notes Bb1, Eb2, and Gb2 are listed vertically.

13 14 15 16 17 18

+ 41ct - 31ct - 12ct

Detailed description: This system contains measures 13 through 18. The treble clef staff has a key signature of two flats. Measure 13 has a whole note chord of Bb2 and Eb3 with a '+ 41ct' adjustment. Measure 14 has a whole note Eb3 with a '- 31ct' adjustment. Measure 15 has a whole note Gb3 with a '- 12ct' adjustment. Measure 16 has a whole note Bb3. Measure 17 has a whole note chord of Bb3 and Eb4. Measure 18 has a whole note Eb4. The bass clef staff is empty.

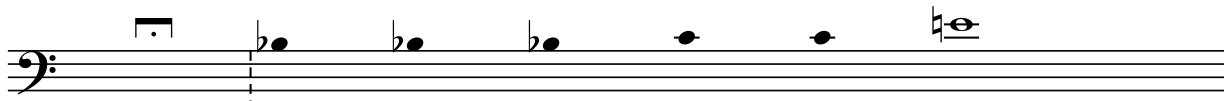
19 20 21 22 23 24

Detailed description: This system contains measures 19 through 24. The treble clef staff has a key signature of one flat (Bb). Measure 19 has a whole note chord of Bb2 and Eb3. Measure 20 has a whole note Eb3. Measure 21 has a whole note Gb3 with a '-' sign above it. Measure 22 has a whole note Bb3 with a '+' sign above it. Measure 23 has a whole note chord of Bb3 and Eb4 with a '+' sign above it. Measure 24 has a whole note Eb4. The bass clef staff is empty.

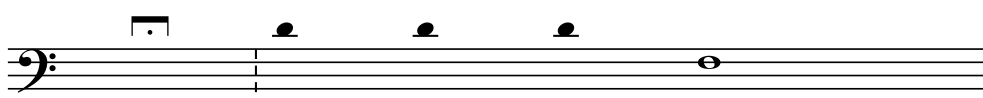
25 26 27 28 29 30 31 32

Detailed description: This system contains measures 25 through 32. The treble clef staff has a key signature of one flat. Measure 25 has a whole note chord of Bb2 and Eb3. Measure 26 has a whole note Eb3 with a '+' sign above it. Measure 27 has a whole note Gb3. Measure 28 has a whole note chord of Bb3 and Eb4 with a '-' sign above it. Measure 29 has a whole note chord of Bb3 and Eb4 with a '+' sign above it. Measure 30 has a whole note chord of Bb3 and Eb4. Measure 31 has a whole note Eb4 with a '+' sign above it. Measure 32 has a whole note chord of Bb3 and Eb4.

(- 49ct)
(falsetto)



we learned the whole of love



the al - pha - bet

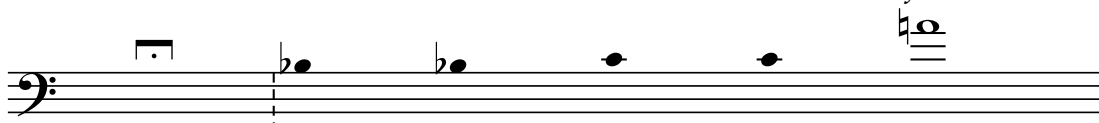


the words

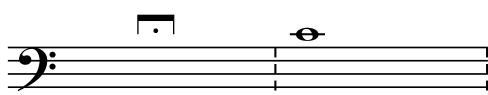


a chap - ter

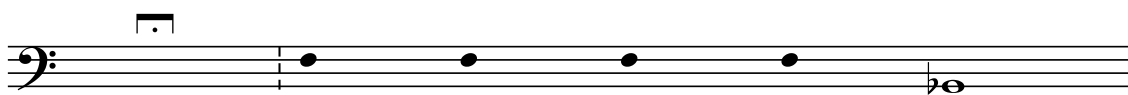
(- 12ct)
falsetto



then the migh - ty book



then



re - ve - la - tion closed

echo space I

(- 31ct)
falsetto

but in each oth - er's eyes an ig - no - rance be - held

di - vi - ner than the child - hood's

and each to each, a child

echo space II

at - temp - ted to ex - pound what nei - ther

un - der - stood

a - las, that wis - dom is so large

and truth

so ma - ni - fold!

echo space III