

by a departing light IX

violin

eva-maria houben

© **edition wandelweiser 2023**

catalogue number ew16.447



Photo: Norbert Bruggmann

by a departing light IX
violin

eva-maria houben
2023

For Clara Levy.

By a departing light
We see acuter, quite,
Than by a wick that stays.
There's something in the flight
That clarifies the sight
And decks the rays

(Emily Dickinson)

the piece at large is slow, within this range any tempo;

the piece at large is soft, within this range any dynamics;

single sounds and any groups of sounds;

any breaks, any pauses.

natural harmonics:

roman numerals indicate the string, arabic numerals indicate the partial number.

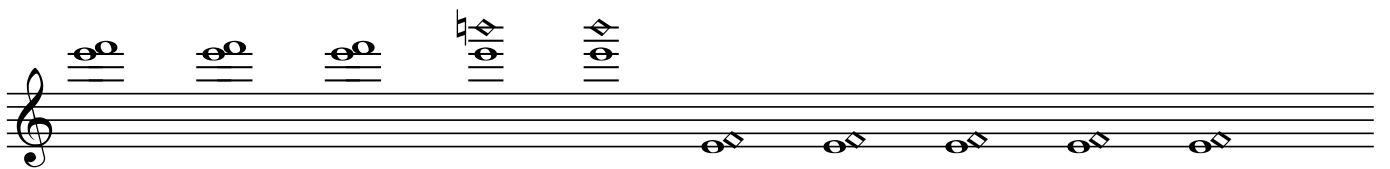
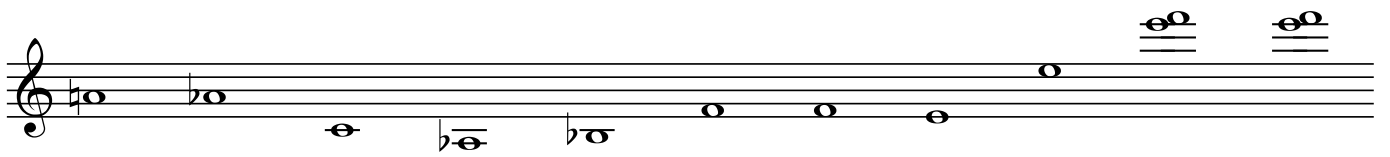
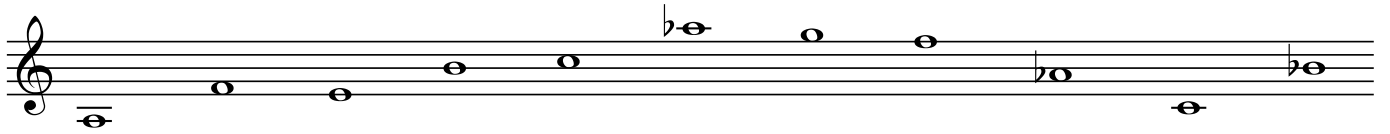
very high natural partials come into being nearly as pure noise. the high amount of noise and the difficult intonation are welcome.

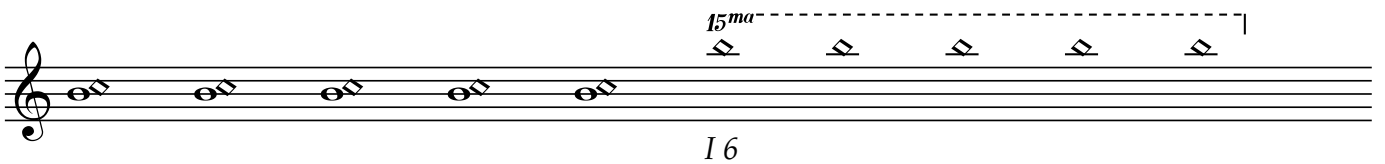
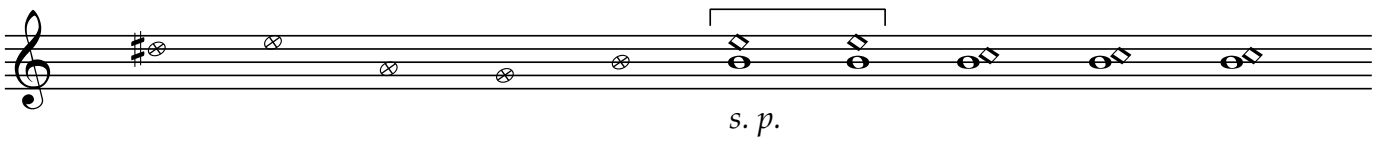
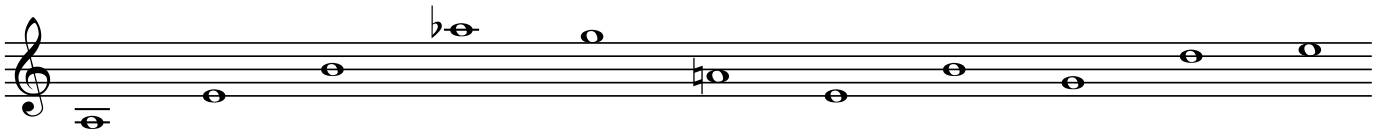
cross within a circle: low pressure of the bow.

tones within the distance of a second (one diamond-shaped) are played with different pressure of the string. the note as a whole one is played with full finger pressure, the diamond-shaped note with a light finger pressure.

cross notes “molto sul tasto”. the arrow means any change of the bow between the strings in any order for rather a while.

becoming ever quieter and calmer; falling more and more into silence.







A musical staff in treble clef. The notes are: G4, A4, B4, C5, B4, A4, G4. The last three notes (B4, A4, G4) are grouped by a bracket above them. Below the staff, the letters "s. p." are written.

A musical staff in treble clef. The first five notes are: B4, B4, B4, B4, B4, each with a diamond-shaped chord symbol above it. A bracket above these notes is connected to a circled "C" above the staff. Below the staff, there are four "x" marks on the lines, with a double-headed arrow below them labeled "m. s. t.". To the right, there is a chord symbol consisting of a sharp sign, a "6", and a "15" above it. The number "19" is written below the staff.

A musical staff in treble clef. It contains six notes: G4, A4, B4, C5, B4, A4. The notes are marked with circled 'x' symbols. A sharp sign is placed above the second note (A4) and the fourth note (B4). Above the last five notes (A4, B4, C5, B4, A4), there are five diamond-shaped chord symbols, each containing a 'b' and a 'p'. A bracket spans these five chord symbols. Below the staff, the text "s. p." is written.

A musical staff in treble clef. It contains six notes: G4, A4, B4, C5, B4, A4. The notes are marked with circled 'x' symbols. A sharp sign is placed above the second note (A4). Above the last five notes (A4, B4, C5, B4, A4), there are five diamond-shaped chord symbols, each containing a 'b' and a 'p'. A bracket spans these five chord symbols. Above the fifth note (B4), there is a circled 'c' symbol. At the end of the staff, there are two diamond-shaped chord symbols, each containing a 'b' and a 'p', with a dashed line above them labeled "15^{ma}". Below the staff, there are performance markings: a double bar line with "II 10" below it, and another double bar line with "I 8" below it. A double-headed arrow below the staff is labeled "m. s. t.".

The image shows a musical score for guitar on a single staff. The notation includes a treble clef, a key signature of one sharp (F#), and a 4/4 time signature. The score is divided into two sections: *s. p.* (soprano part) and *m. s. t.* (middle section). The *s. p.* section consists of a sequence of eighth notes: F#4, G4, A4, B4, C5, D5, E5, F#5. The *m. s. t.* section begins with a bracketed group of notes: F#4, G4, A4, B4, C5, D5, E5, F#5. This is followed by a measure with a whole note chord: F#4, G4, A4, B4, C5, D5, E5, F#5. The next measure contains a whole note chord: F#4, G4, A4, B4, C5, D5, E5, F#5. The final measure contains a whole note chord: F#4, G4, A4, B4, C5, D5, E5, F#5. The score is annotated with *s. p.* at the beginning, *m. s. t.* with a double-headed arrow under the first two measures of the second section, and *15ma* with a dashed line and bracket over the final measure. The numbers 17 and 19 are written below the staff.

15ma

I 12



Photo: Norbert Bruggmann