

again and again

voice, piano

eva-maria houben

© edition wandelweiser **2020**

catalogue number ew16.354

again and again
voice and piano

eva-maria houben
2020

again

again and again

anew – again and again

a new day

(eva-maria houben)

voice and piano alternatingly.

the voice not entering before the full decay of the last piano sound.

piano

voice – silence

piano

voice – silence

piano

voice – silence

piano

voice – silence

piano

voice:

musingly.

pensively.

piano:

all sounds may overlap.

all indrawn.



The image shows a musical score for a piano piece, consisting of two staves: a treble staff (top) and a bass staff (bottom). The treble staff begins with a treble clef and contains four notes: a quarter note with a sharp sign (F#) on the second line, a quarter note with a sharp sign (C#) on the first space, a quarter note with a natural sign (D) on the second space, and a quarter note with a sharp sign (G#) on the third space. The bass staff begins with a bass clef and contains three notes: a quarter note with a natural sign (F) on the second space, a quarter note with a natural sign (C) on the first space, and a quarter note with a sharp sign (G#) on the second space. The notes are positioned as follows: Treble staff: F# (line 2), C# (space 1), D (space 2), G# (space 3). Bass staff: F (space 2), C (space 1), G# (space 2).

A musical score for piano, consisting of two staves: a treble staff (top) and a bass staff (bottom). The treble staff begins with a treble clef and a key signature of one sharp (F#). The bass staff begins with a bass clef. The score contains several notes and rests:

- Treble Staff:**
 - First measure: A whole note F#4.
 - Second measure: A whole rest.
 - Third measure: A whole note G4.
 - Fourth measure: A whole note A4.
 - Fifth measure: A whole note B4, with a dynamic marking of *p* and a *8va* instruction above it.
 - Sixth measure: A whole note C5, with a dynamic marking of *p* and a sharp sign (#) above it.
 - Seventh measure: A whole rest.
 - Eighth measure: A whole note D5, with a dynamic marking of *p* and a sharp sign (#) above it.
- Bass Staff:**
 - First measure: A whole note F#2.
 - Second measure: A whole rest.
 - Third measure: A whole rest.
 - Fourth measure: A whole rest.
 - Fifth measure: A whole note G2, with a dynamic marking of *p* below it.
 - Sixth measure: A whole rest.
 - Seventh measure: A whole note A2, with a dynamic marking of *p* below it.
 - Eighth measure: A whole note B2, with a dynamic marking of *p* and a sharp sign (#) below it.

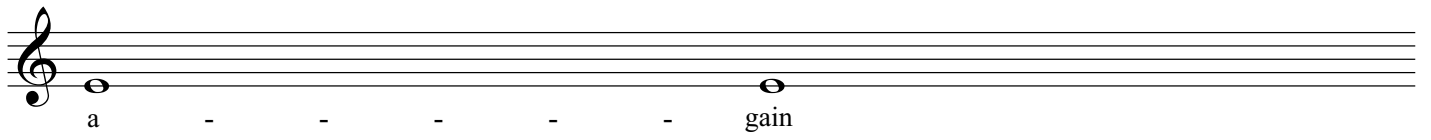
Musical notation for a piano piece, page 3. The score consists of two staves: a treble clef staff and a bass clef staff. The treble staff begins with a quarter note G4. Above the treble staff are three accidentals: a flat (b), a sharp-flat (b#), and a double-flat (bb). The bass staff begins with a quarter note G#3. Below the bass staff are two accidentals: a sharp-flat-double-flat (bb#) with an 8va below it, and a flat (b).

The image shows a musical score for a piano piece, consisting of two staves: a treble staff (top) and a bass staff (bottom). The treble staff begins with a treble clef and contains four notes: a whole note G4 (one sharp), a whole note A4 (two sharps), a whole note B4 (three sharps), and a whole note C5 (four sharps). The bass staff begins with a bass clef and contains four notes: a whole note G3 (one sharp), a whole note A3 (two sharps), a whole note B3 (three sharps), and a whole note C4 (four sharps). The notes in both staves are vertically aligned, suggesting a harmonic relationship between the two parts.

A musical score on a grand staff consisting of two treble clefs and two bass clefs. The notation includes several notes and accidentals:

- Treble Clef (Top Staff):**
 - Measure 1: A whole note G4.
 - Measure 2: A whole note A4 with a sharp sign (#).
 - Measure 3: A whole note B4.
 - Measure 4: A whole note C5 with a sharp sign (#).
 - Measure 5: A whole note D5.
 - Measure 6: A whole note E5 with a sharp sign (#).
 - Measure 7: A whole note F5 with a sharp sign (#).
 - Measure 8: A whole note G5 with a sharp sign (#).
- Bass Clef (Bottom Staff):**
 - Measure 1: A whole note G2.
 - Measure 2: A whole note A2 with a sharp sign (#).
 - Measure 3: A whole note B2.
 - Measure 4: A whole note C3 with a sharp sign (#).
 - Measure 5: A whole note D3.
 - Measure 6: A whole note E3 with a sharp sign (#).
 - Measure 7: A whole note F3 with a sharp sign (#).
 - Measure 8: A whole note G3 with a sharp sign (#) and an *8vb* marking below it.





A musical staff with a treble clef. The staff contains five notes: a half note on G4, a half note on A4, a half note on B4, a half note on C5, and a half note on D5 with a sharp sign. Below the staff, the lyrics are written: 'a - - gain and a - - gain'. The first 'a' is aligned with the first note, 'gain' with the second, 'and' with the third, the second 'a' with the fourth, and the second 'gain' with the fifth.

A musical staff with a treble clef and a key signature of one sharp (F#). The melody consists of seven half notes: F#4, A4, B4, C5, B4, A4, and F#4. The lyrics are: a - new a - gain and a - gain. A checkmark is placed above the staff between the first and second notes.

A musical staff with a treble clef and a key signature of one sharp (F#). The staff contains three whole notes, each with a sharp sign (#) before it. The notes are on the first, second, and fourth lines of the staff. Below the staff, the lyrics 'a', 'new', and 'day' are aligned with their respective notes.

a new day





