

listening to yourself

double bass (five strings), drone

eva-maria houben

© **edition wandelweiser 2019**

catalogue number ew16.332a

listening to yourself

double bass (five strings), drone

eva-maria houben

2019

for louis-michel marion.

each page a place to dwell.

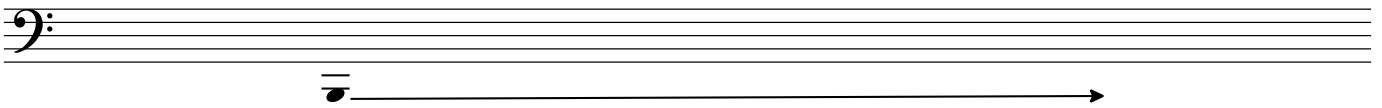
double bass:

natural partials.

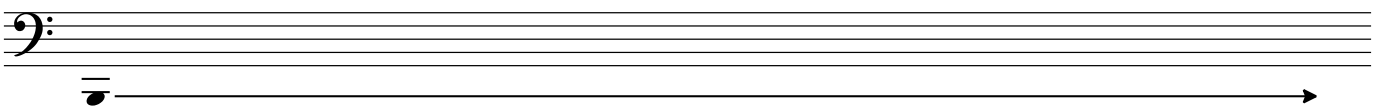
- : rather short duration.
- : long(er) duration.
- : a sustained sound, lasting for some time.

(and so on): you may repeat the last sound(s) several times ad libitum.

double bass



drone

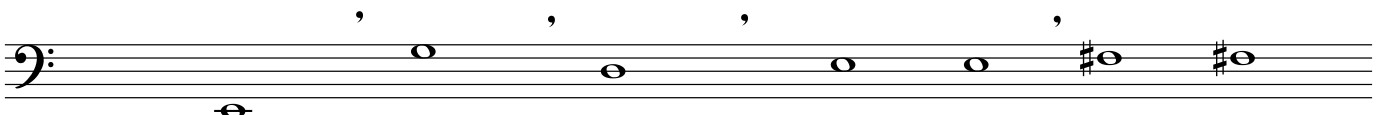


Comma above staff

(and so on)

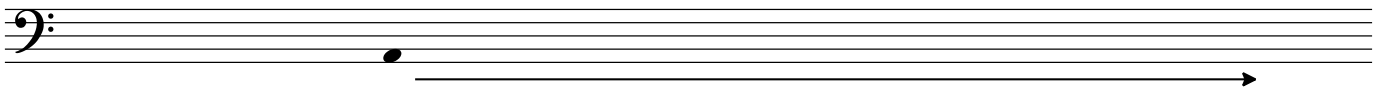
Comma above staff

(and so on)

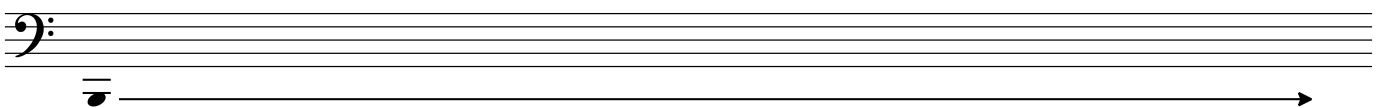


A musical staff in bass clef containing a sequence of notes: a whole note G2, a whole note A2, a whole note B2, a whole note C3, a whole note D3, a whole note E3, a whole note F#3, and a whole note G#3. Above the staff, there are four commas (',') positioned above the notes A2, B2, C3, and E3. Below the staff, there is a single comma (',') positioned below the note G2. The text "(and so on)" is written to the right of the staff.

(and so on)



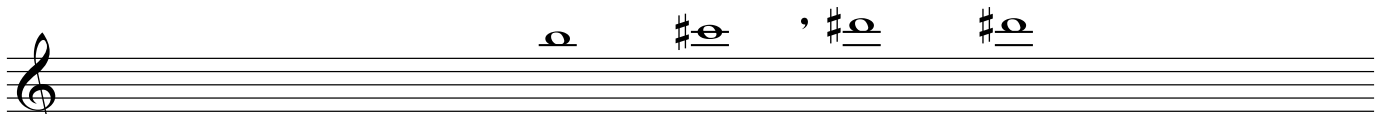
A musical staff in bass clef containing a single whole note G2. A horizontal line with an arrow at the right end extends from the right side of the note across the staff.



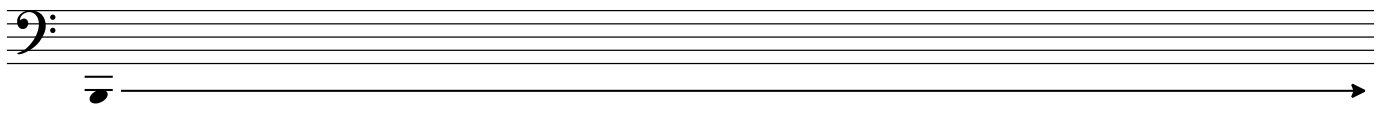
A musical staff in bass clef containing a single whole note G2. A horizontal line with an arrow at the right end extends from the right side of the note across the staff.



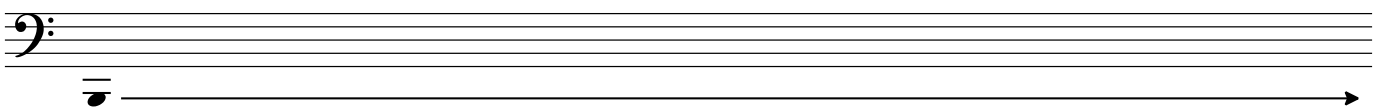
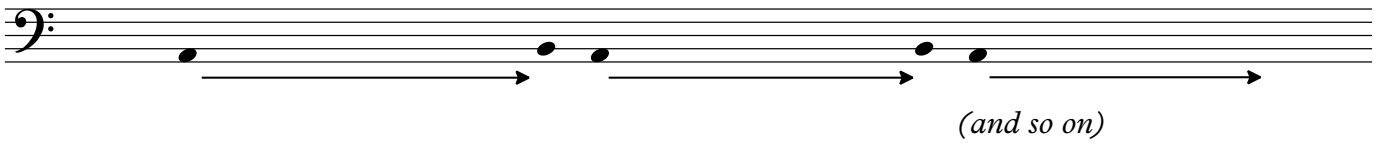
A musical staff in treble clef containing seven notes: F#4, G4, A4, B4, C5, B4, A4. A comma is placed above the B4 note. The text "(and so on)" is written below the staff.



A musical staff in treble clef containing four notes: B4, C5, D5, E5. A comma is placed above the D5 note. The text "(and so on)" is written below the staff.



A musical staff in bass clef with a horizontal line drawn across it, starting from the first line and extending to the right with an arrowhead.

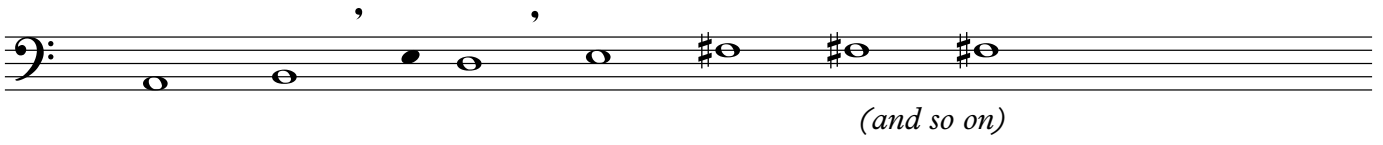


A musical staff in bass clef containing a sequence of notes: G4, A4, B4, C#5, D5, E5, F5, G5, A5, B5, C6. There are two comma-like symbols above the staff, one above the C#5 note and one above the E5 note. The text "(and so on)" is written below the staff.

A musical staff in treble clef containing a sequence of notes: C#5, D5, E5, F5, G5, A5, B5, C6. There is a comma-like symbol above the staff, positioned above the E5 note. The text "(and so on)" is written below the staff.

A musical staff in bass clef containing a sequence of notes: G4, A4, B4, C#5, D5, E5, F5, G5, A5, B5, C6. Each note is marked with a diamond-shaped symbol above it. The notes are connected by a series of slurs. The text "and so on" is written below the staff.

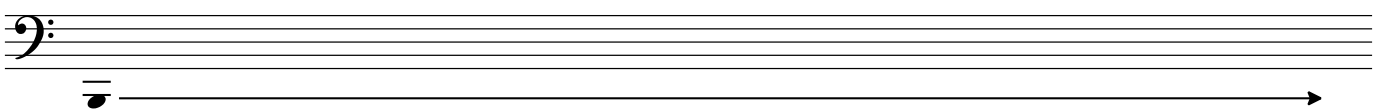
A musical staff in bass clef starting with a single note on G4. A horizontal arrow points to the right from the note, extending across the width of the staff.



A musical staff in bass clef containing a sequence of notes: G2, A2, B2, C3, D3, E3, F#3, G#3, A#3. There are two commas above the staff, one above B2 and one above E3. The text "(and so on)" is written below the staff.



A musical staff in treble clef containing a sequence of notes: C4, D4, E4, F4, G4, A4, B4, C#5, D#5, E#5. There are two commas above the staff, one above E4 and one above A4. The text "(and so on)" is written below the staff three times, centered under the first, fourth, and seventh notes.



A musical staff in bass clef with a single note on the G line (G2). A horizontal arrow points to the right from the note.

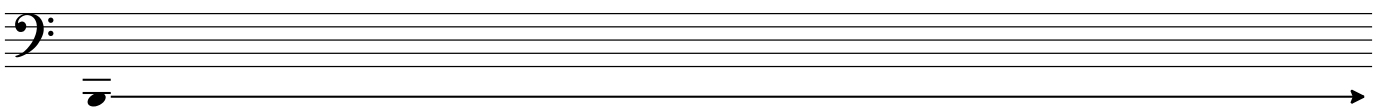
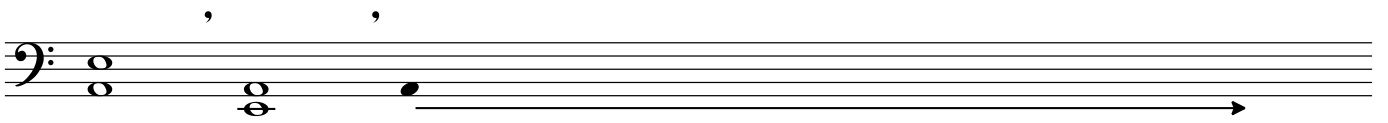
Musical staff with treble clef. Notes: F#4, G#4, A#4, B4, C5, D5, E5. Includes the text "(and so on)".

Musical staff with bass clef. Notes: F#3, G#3, A#3, B3, C4, D4, E4. Includes the text "(and so on)".

sul tasto.

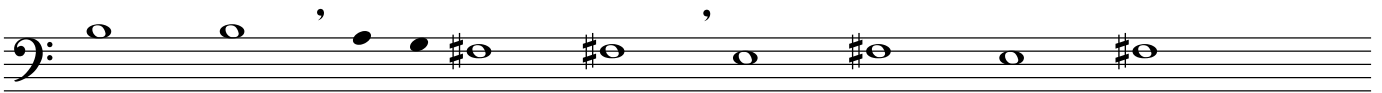
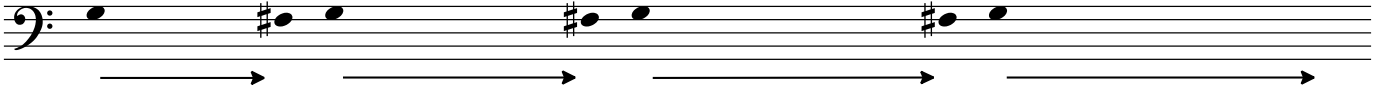
Musical staff with bass clef. A long horizontal line with an arrow starting from a note on the first line.

Musical staff with bass clef. A long horizontal line with an arrow starting from a note on the first line.

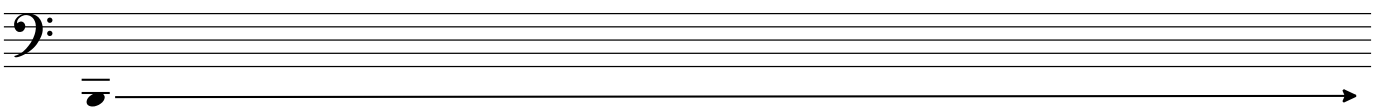


A musical staff in bass clef with a 2/4 time signature. The staff contains the following notes: a whole note chord of G2 and C3, a whole note chord of G2 and C3, a whole note chord of G2 and C3, an accented whole note G2, an accented whole note G2, an accented whole note G2, an accented sharp whole note G2, an accented sharp whole note G2, and an accented sharp whole note G2. The text "(and so on)" is written below the staff.

A musical staff in bass clef. The first measure contains a single note on the G line (G2) with a horizontal line above it. A long arrow points to the right from the end of the first measure.



(and so on)



Musical staff with treble clef. Notes: G#4, A4, B4, C5, D5, E5, F#5, G5. Includes the text "(and so on)".

Musical staff with treble clef. Notes: G4, A4, B4, C5, D5, E5, F#5, G5. Includes the text "(and so on)".

Musical staff with bass clef. Note: G2. Includes an arrow pointing to the right.

Musical staff with bass clef. Note: G2. Includes an arrow pointing to the right.

