

auch da

ensemble

eva-maria houben

© edition wandelweiser **2019**

catalogue number ew16.329

auch da
ensemble

eva-maria houben
2019

for joep dorren.

finding yourself as a soloist among several other soloists.

one page for one performer.

each page a place to find a path from one sound (group of sounds) to the next ones.

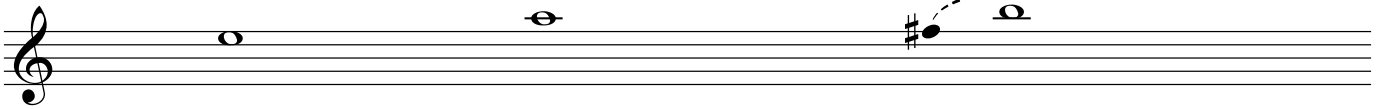
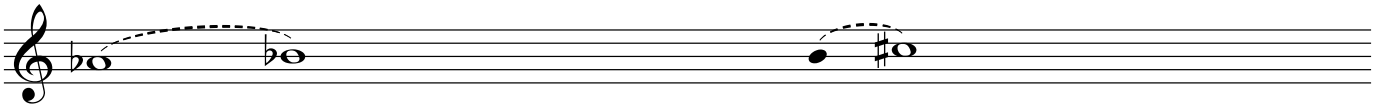
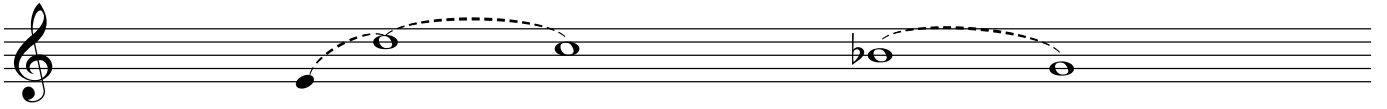
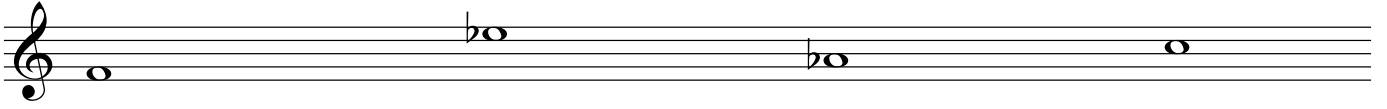
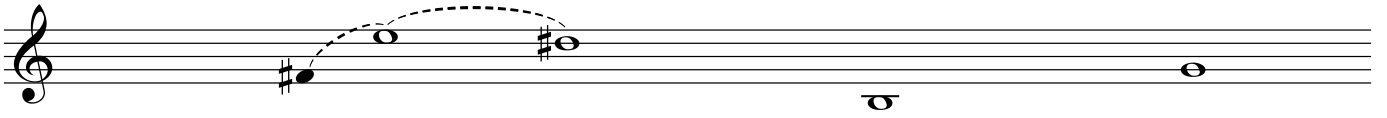
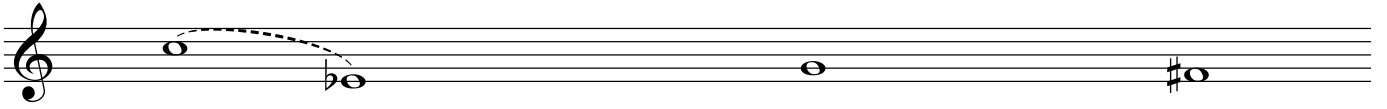
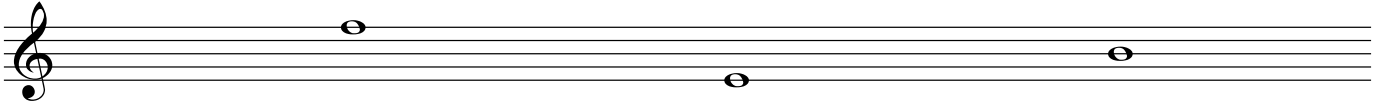
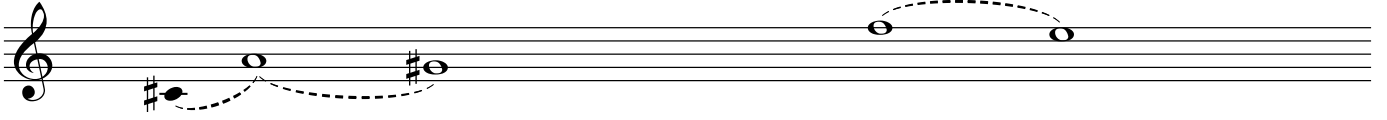
finding your own tempo, your own standstills.

dotted lines: tender connections between sounds.

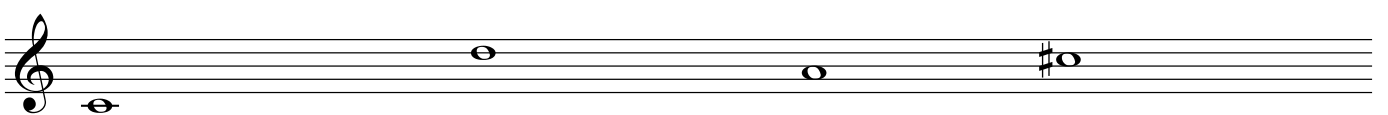
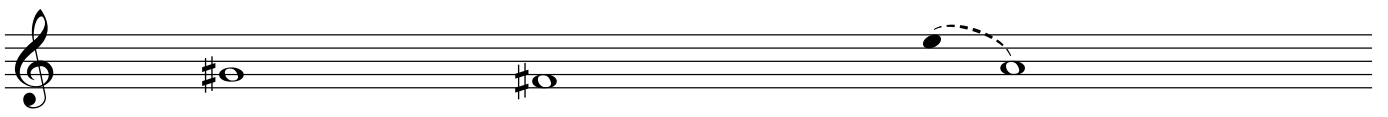
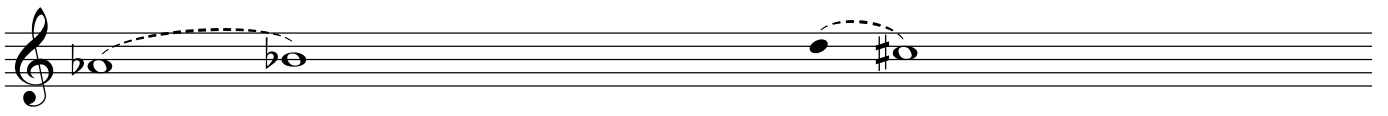
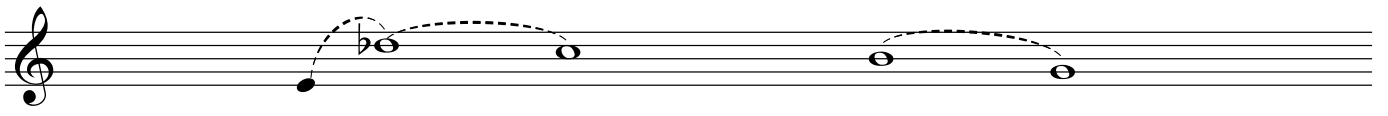
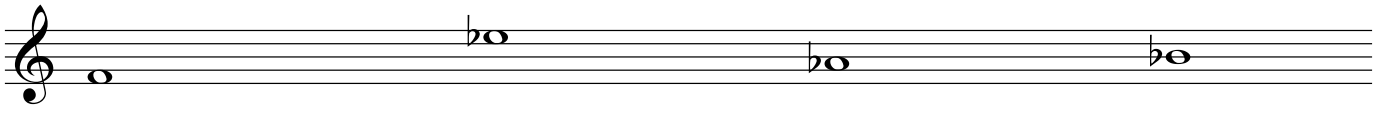
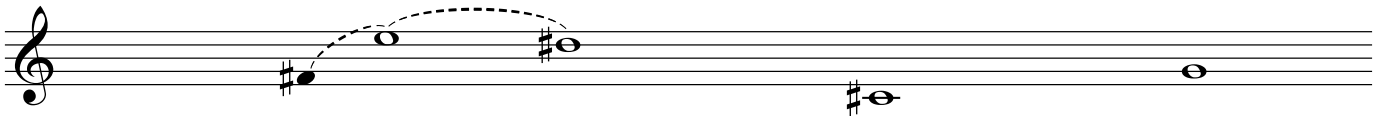
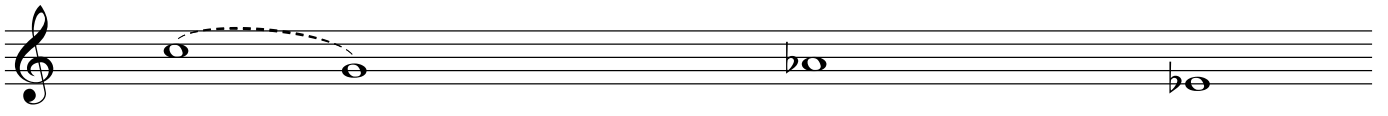
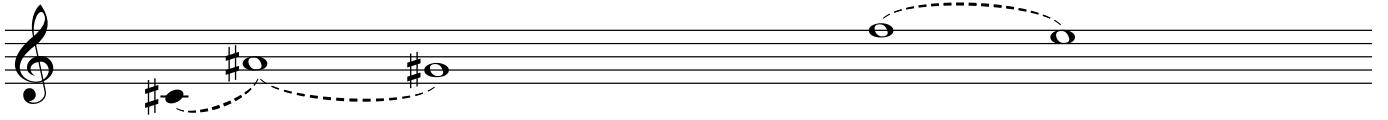
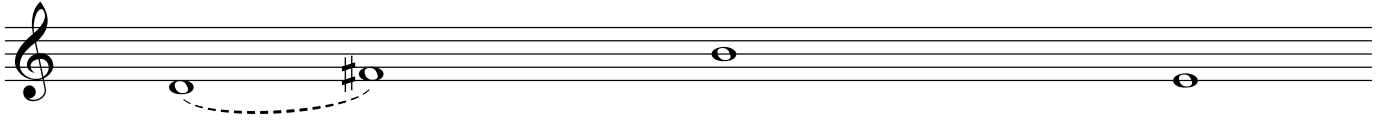
each single sound and each group of sounds on one quiet breath or one quiet bow.

each sound and each group of sounds a soft and tender gesture.

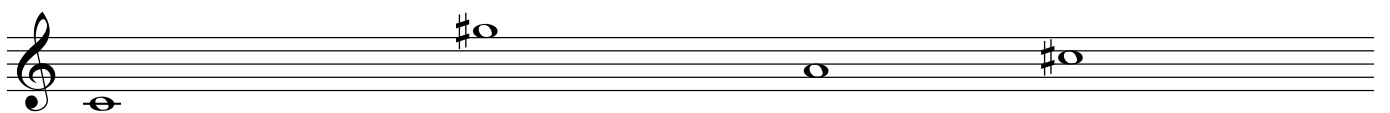
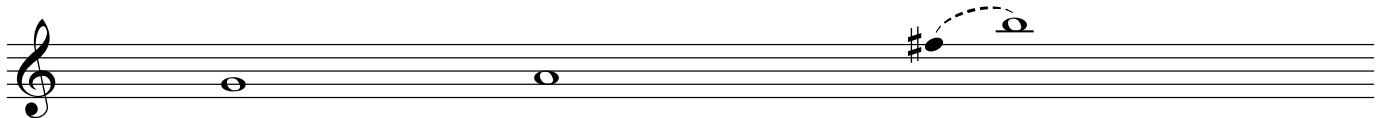
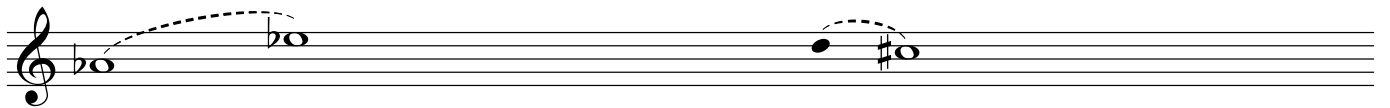
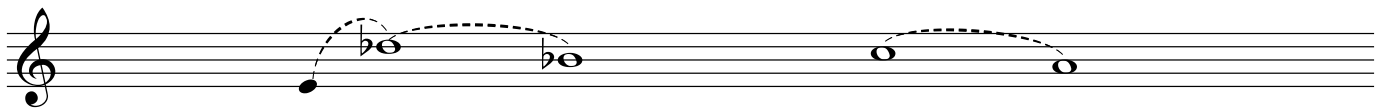
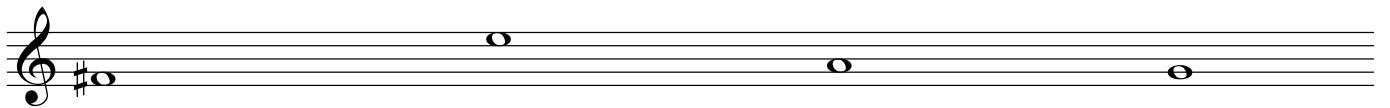
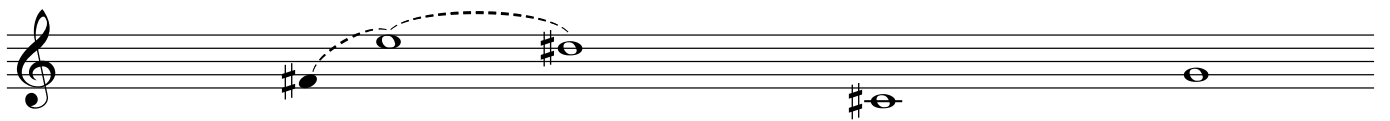
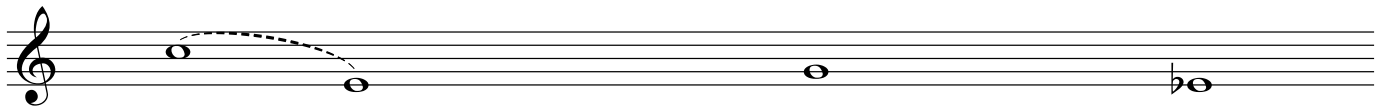
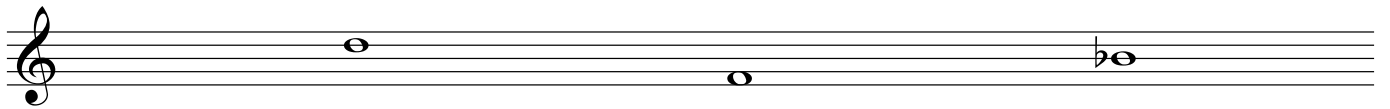
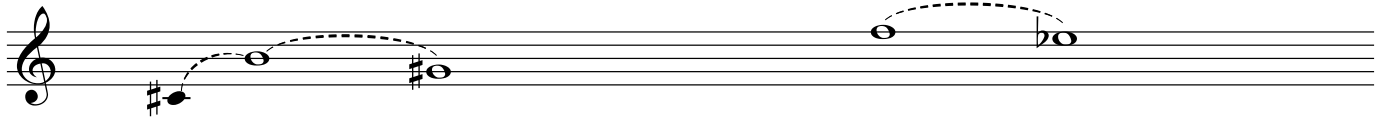
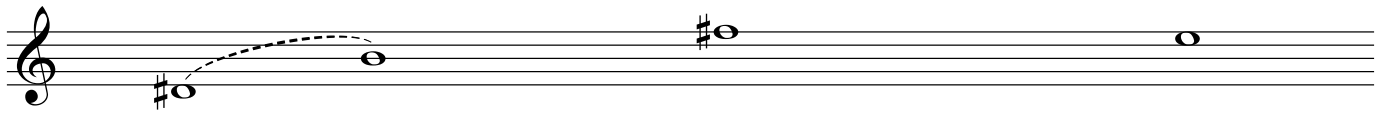
one performer begins—and the other performers follow in their own tempo.



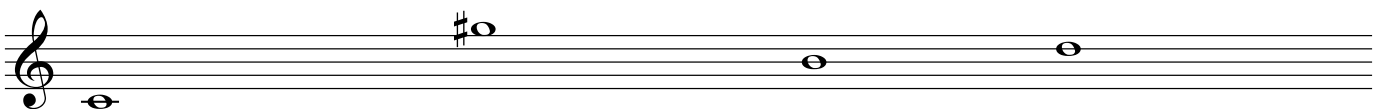
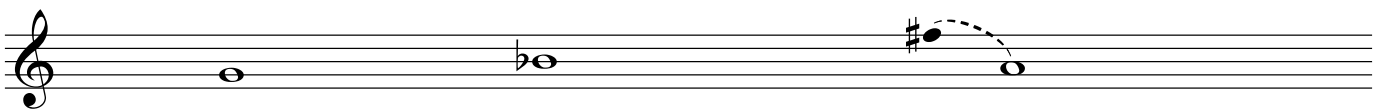
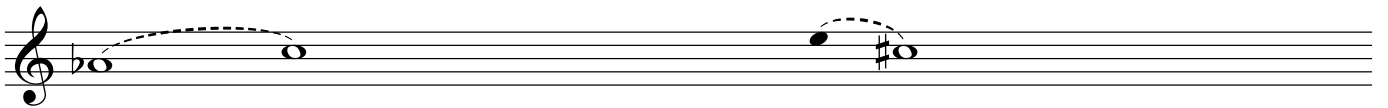
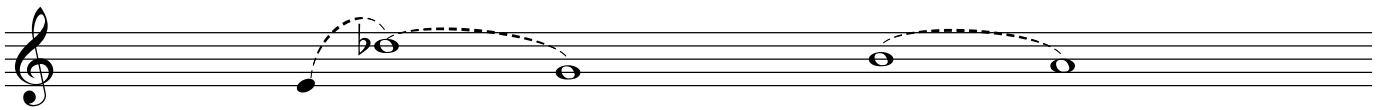
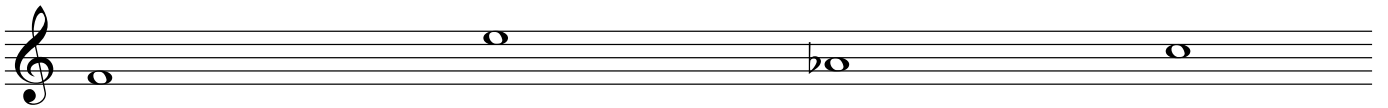
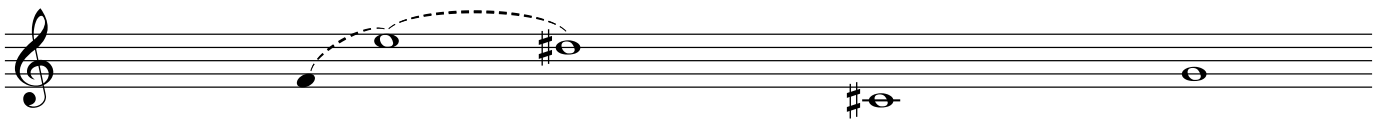
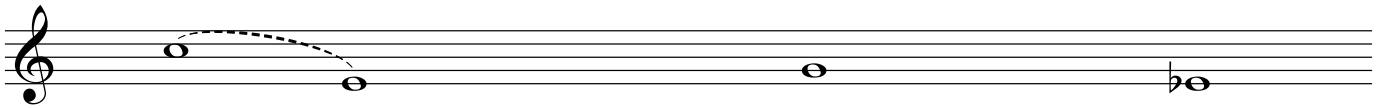
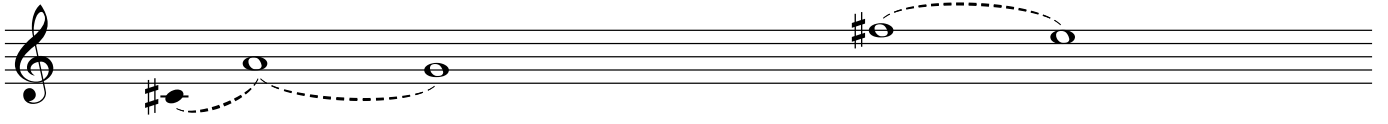
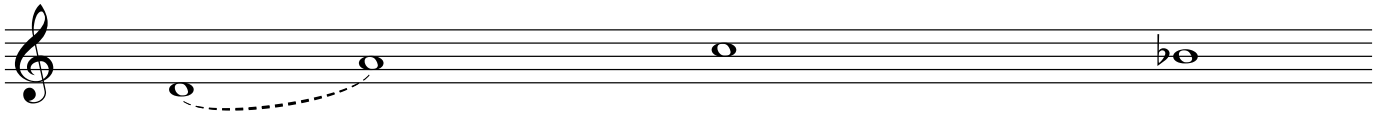
II

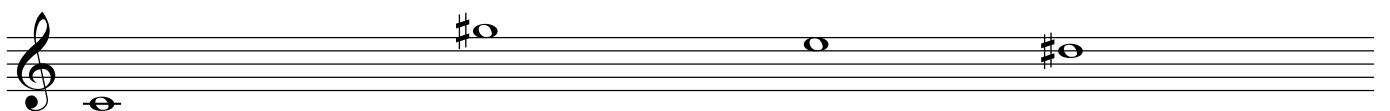
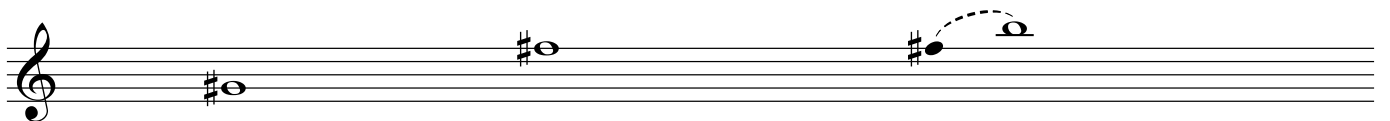
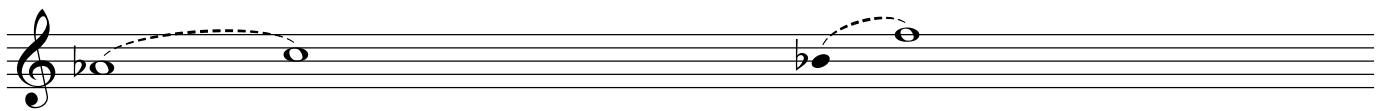
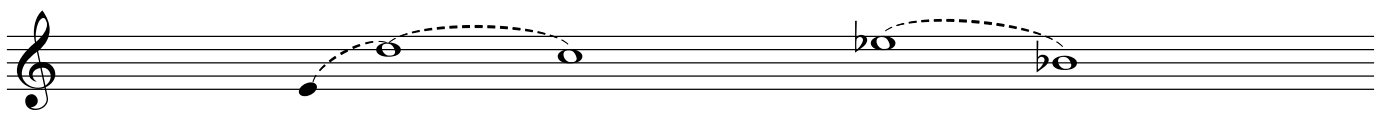
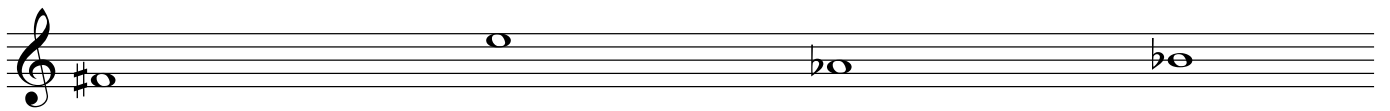
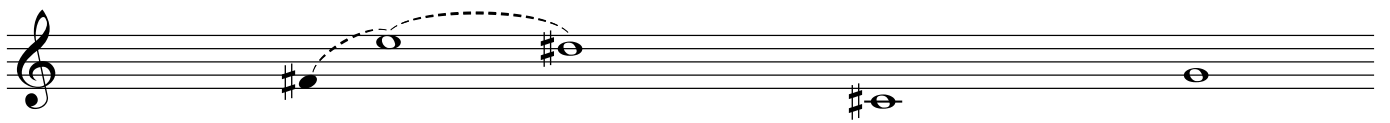
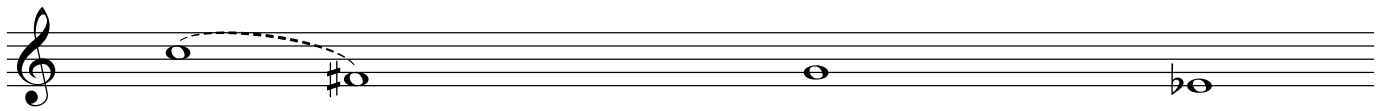
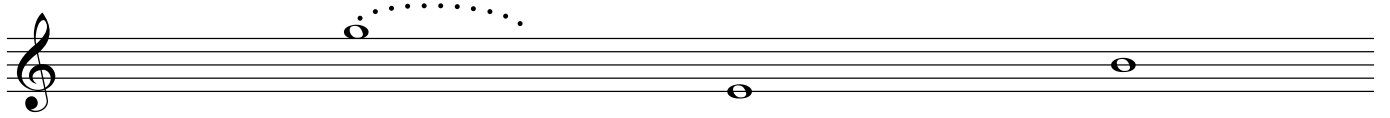
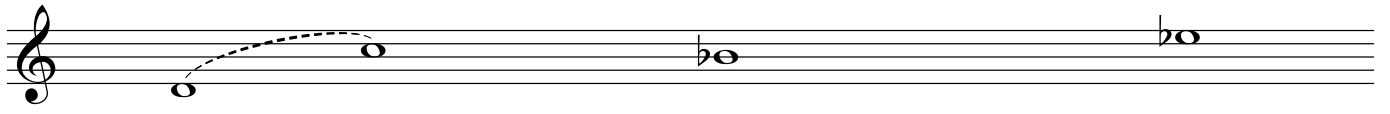


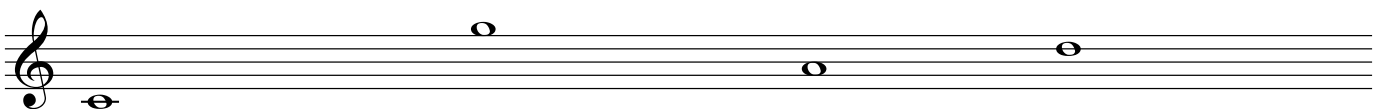
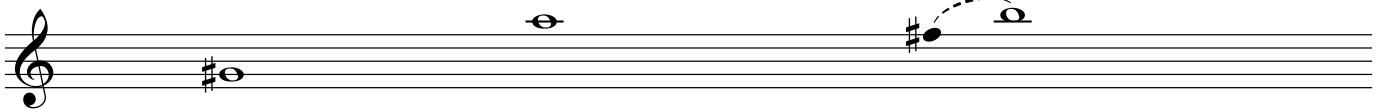
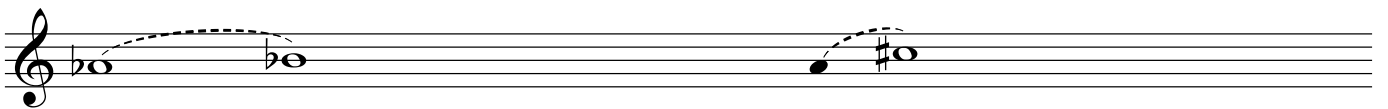
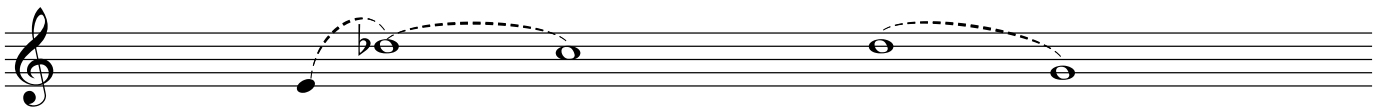
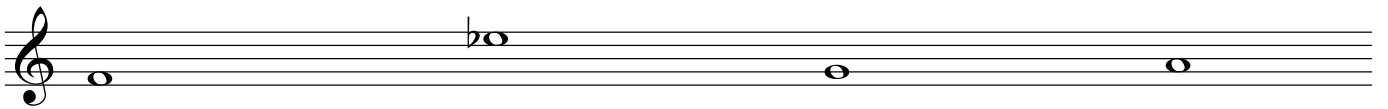
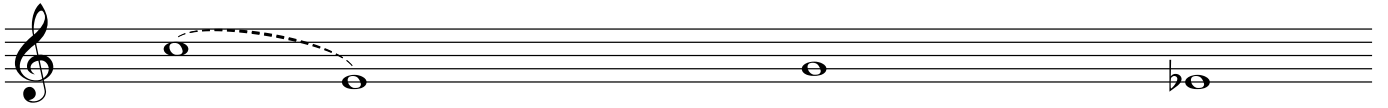
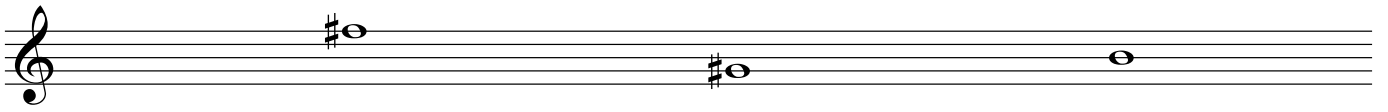
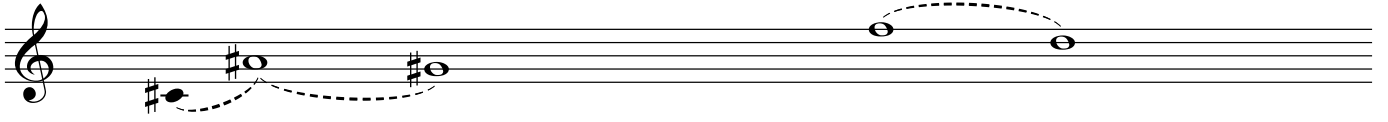
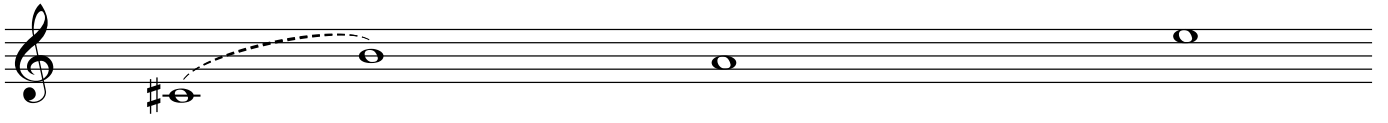
III



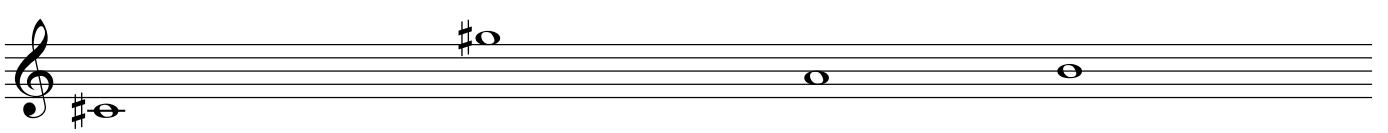
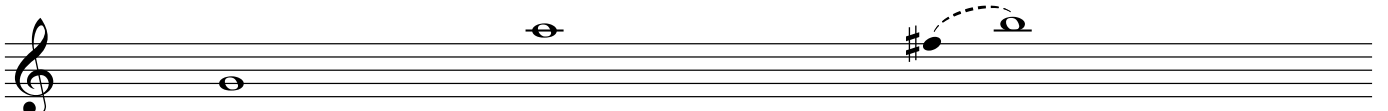
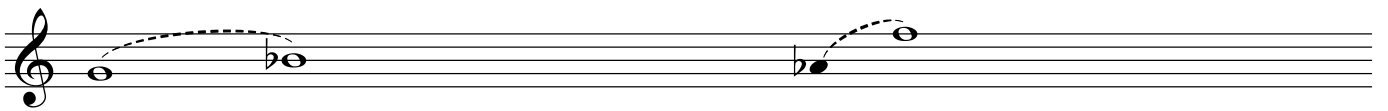
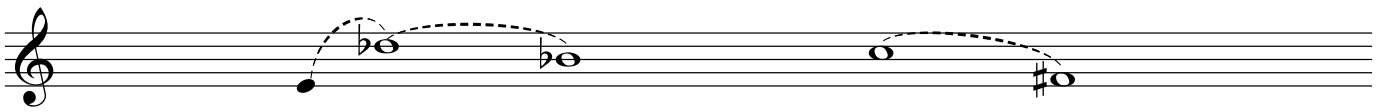
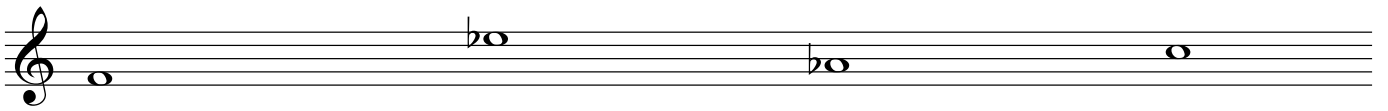
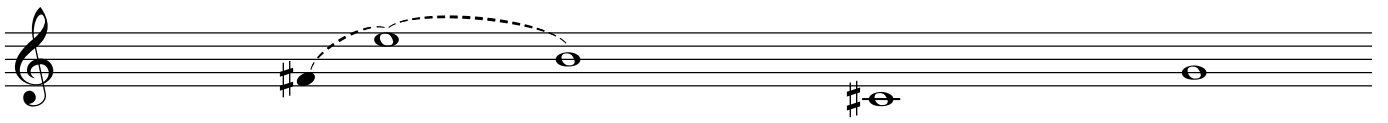
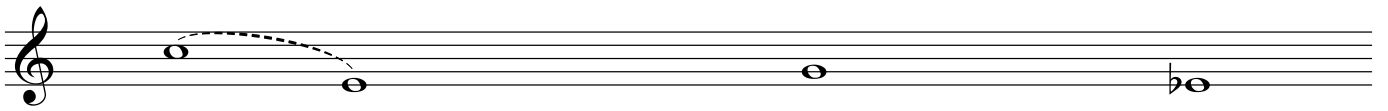
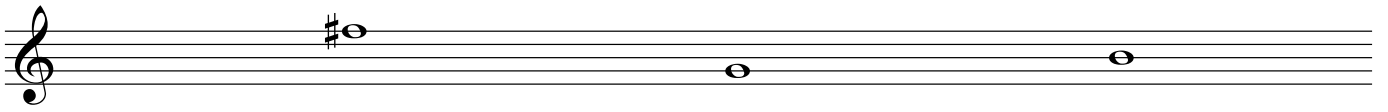
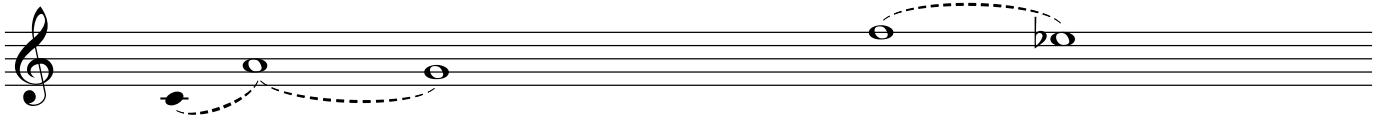
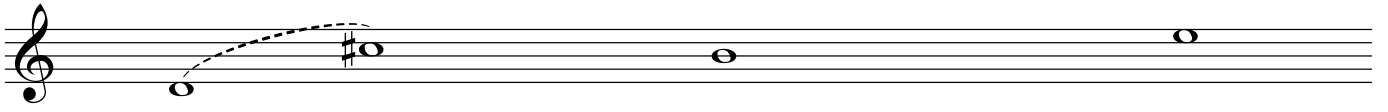
IV



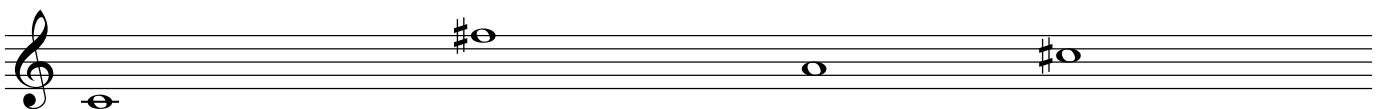
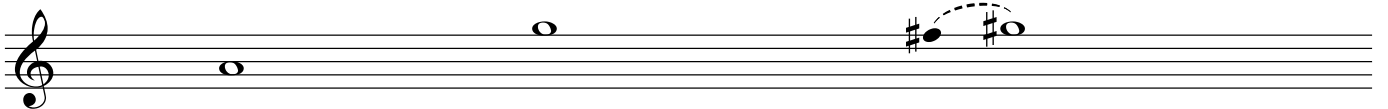
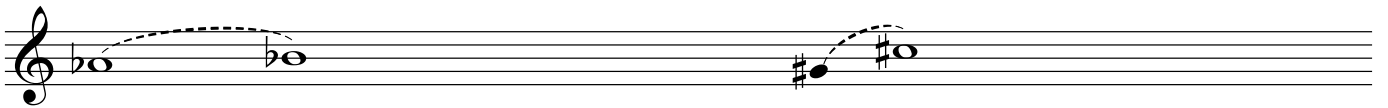
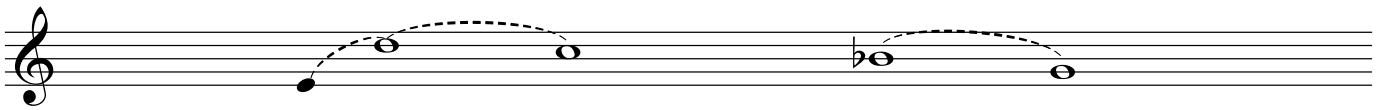
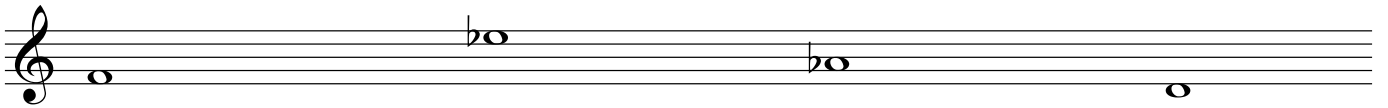
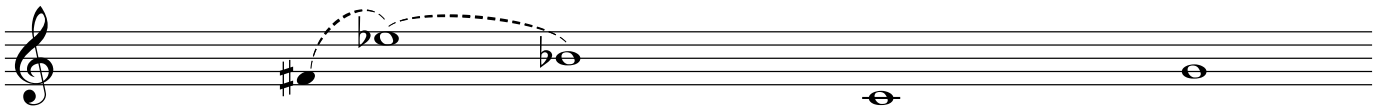
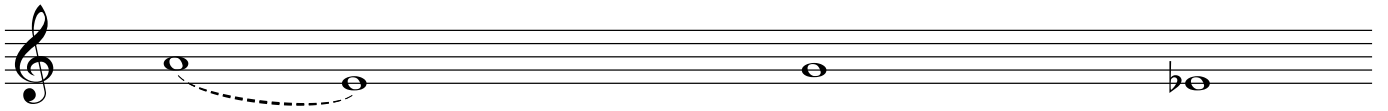
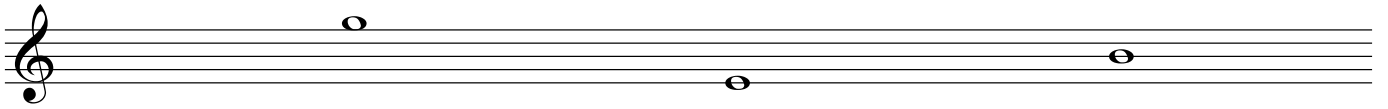
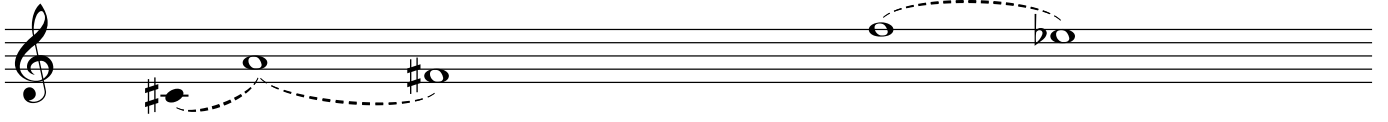
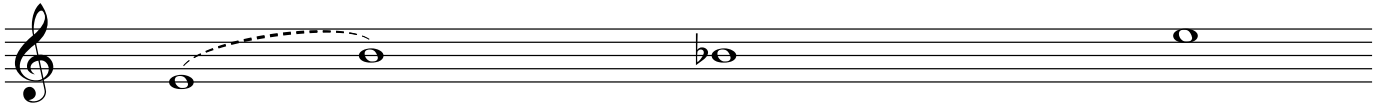


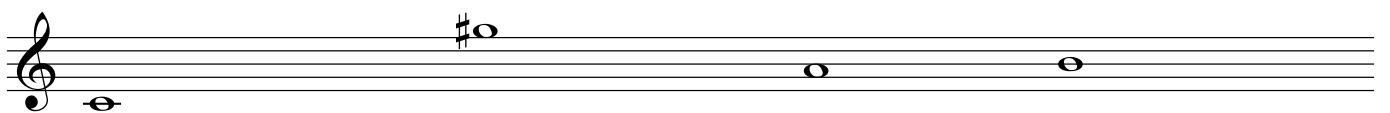
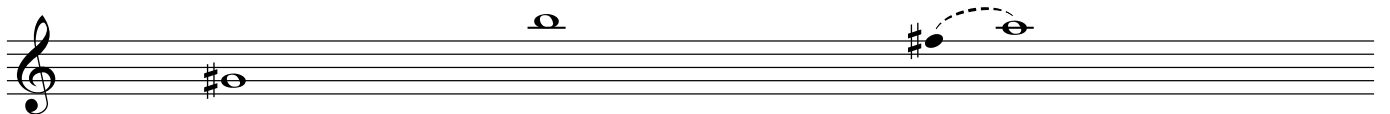
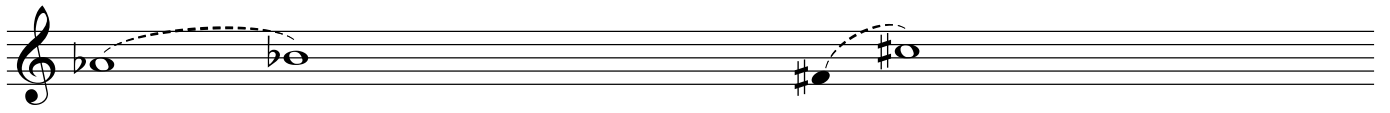
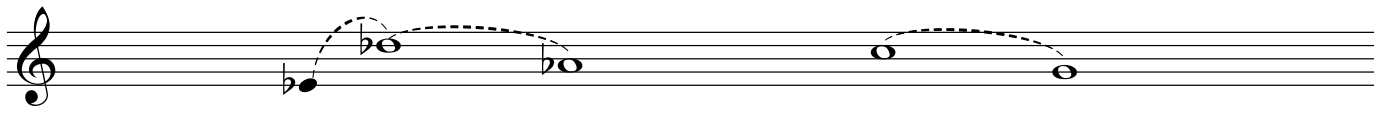
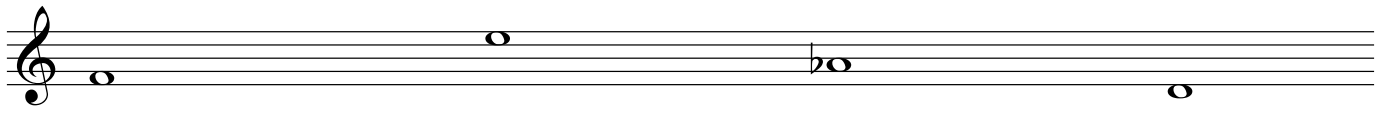
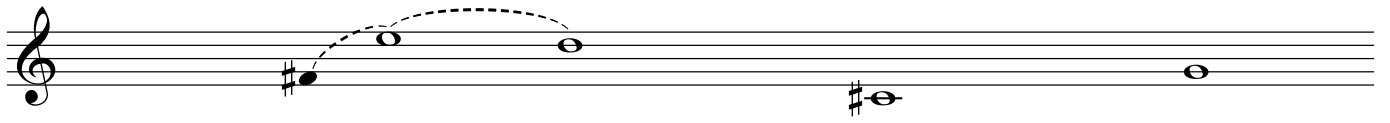
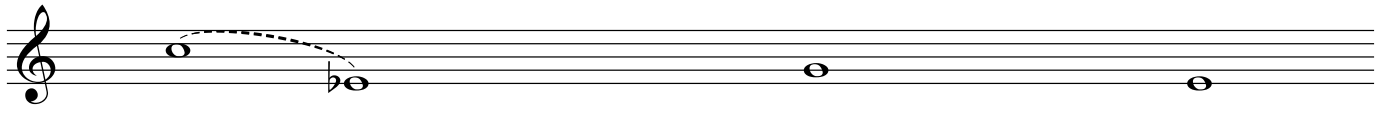
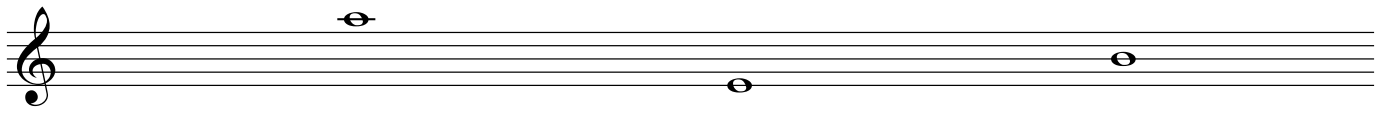
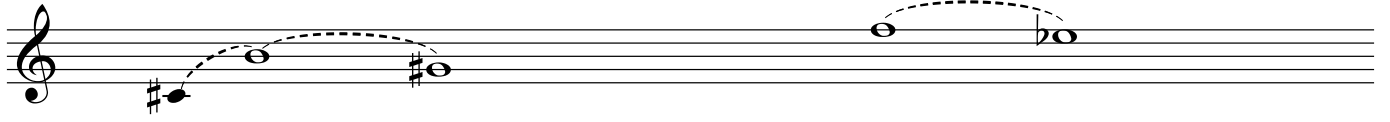
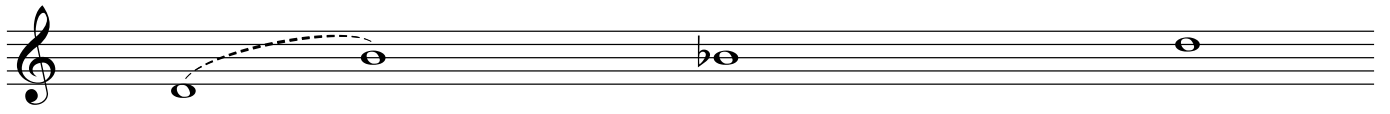


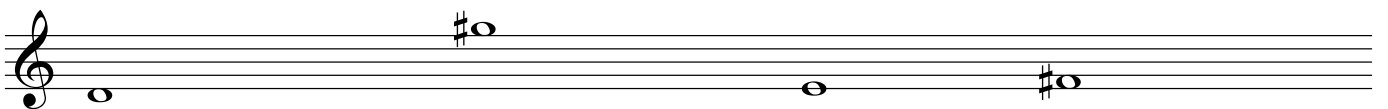
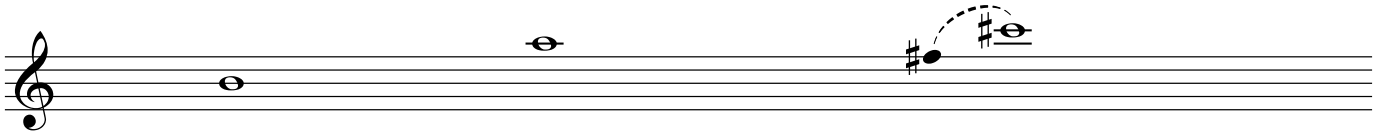
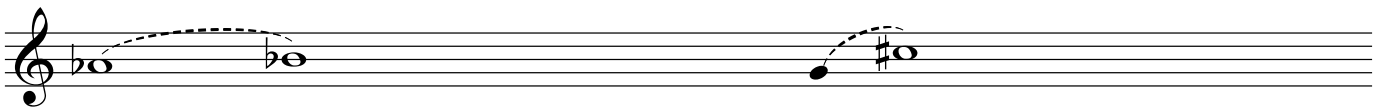
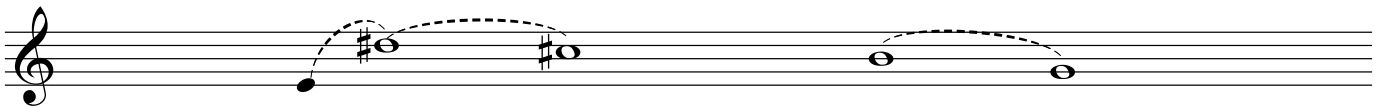
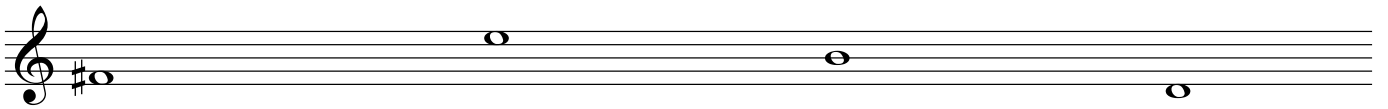
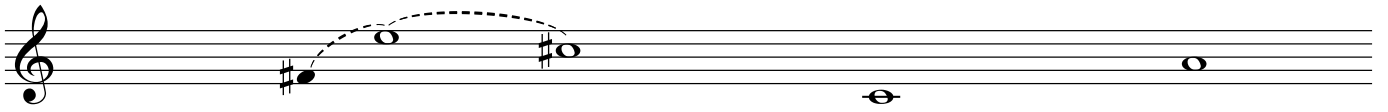
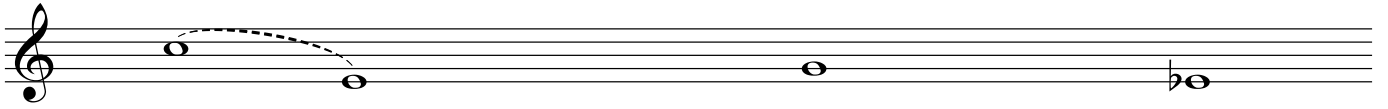
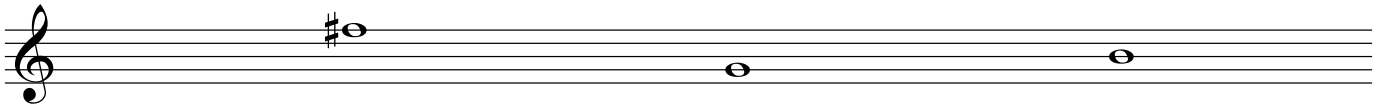
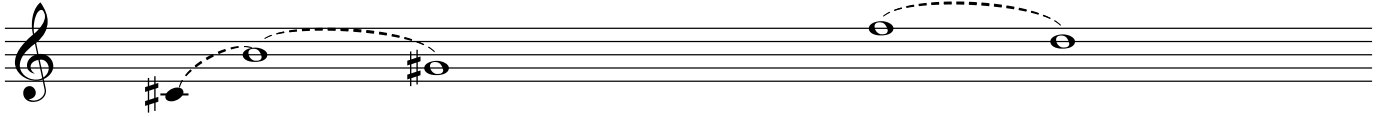
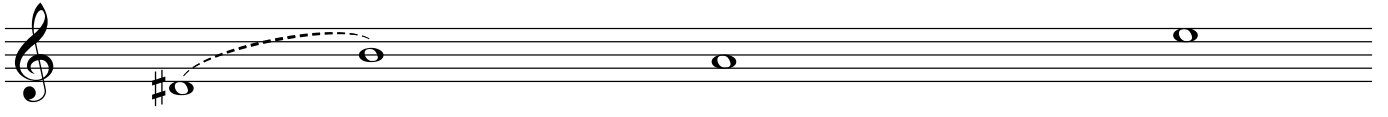
VII

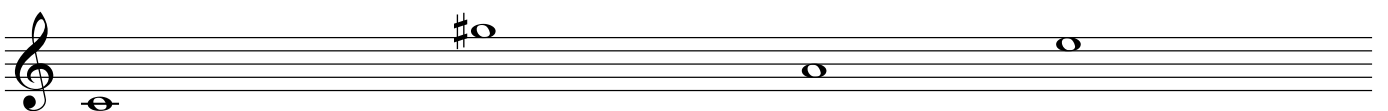
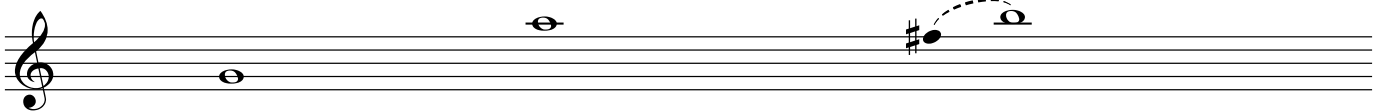
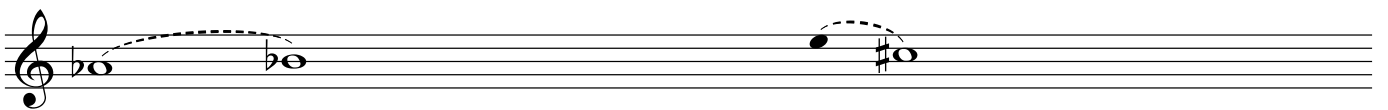
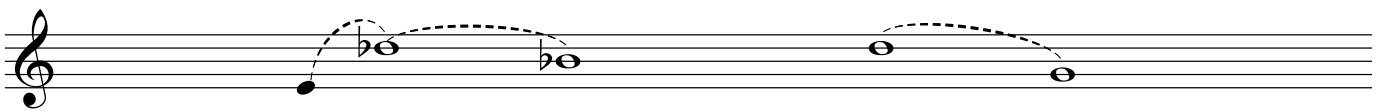
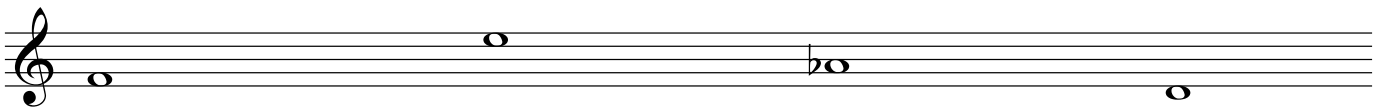
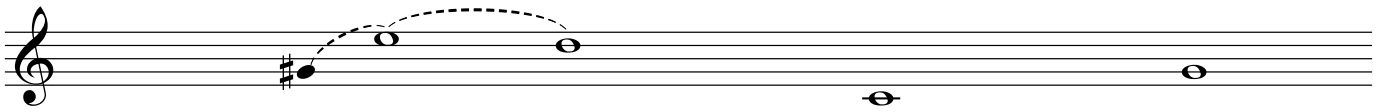
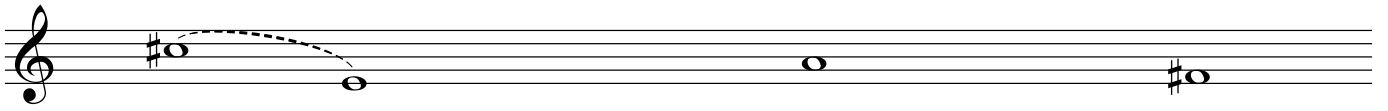
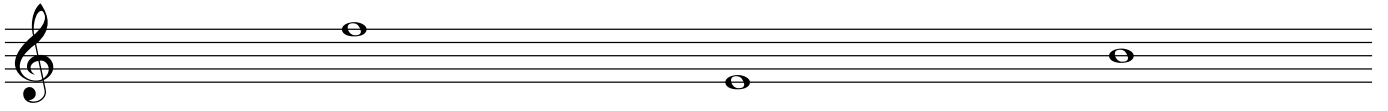
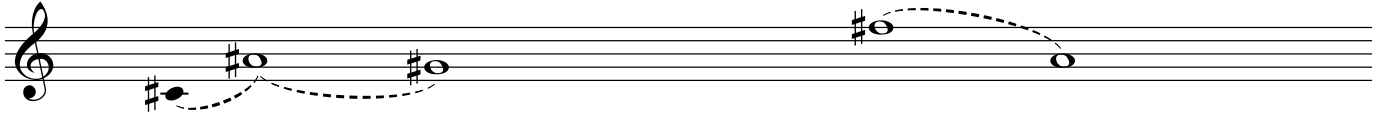


VIII

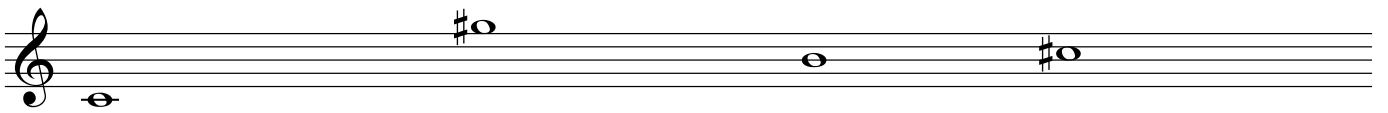
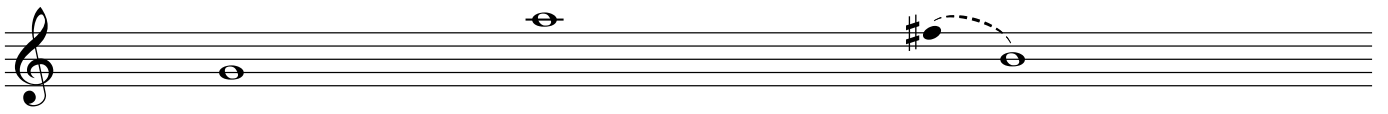
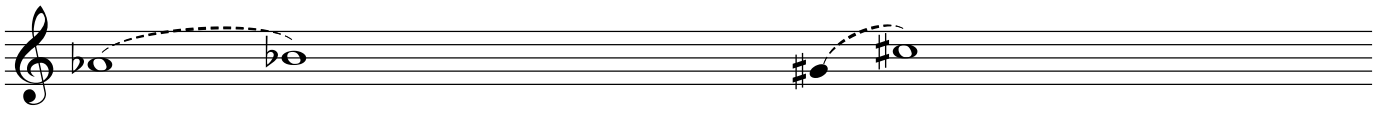
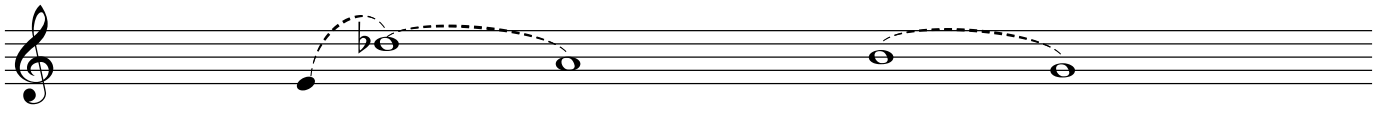
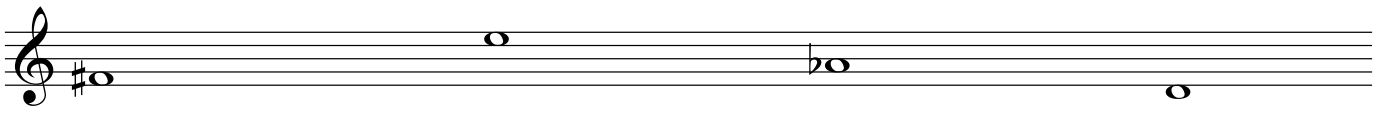
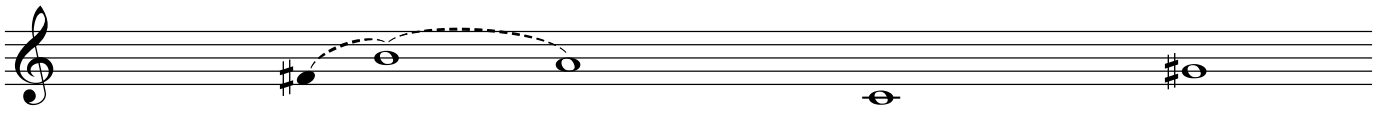
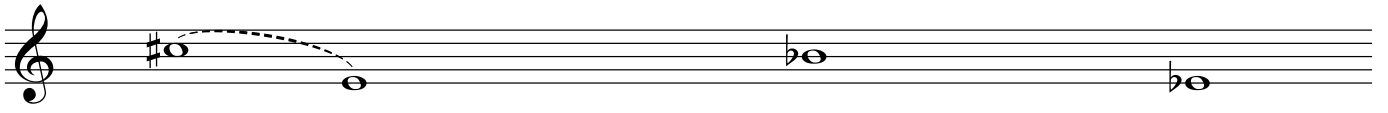
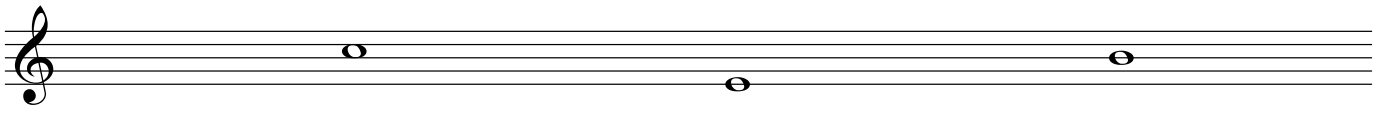
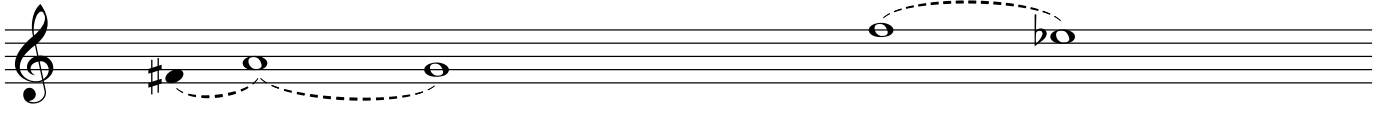




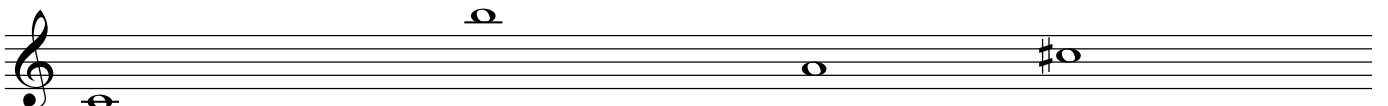
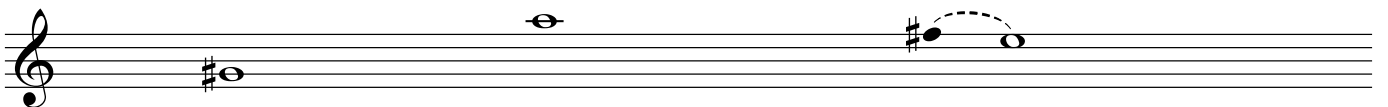
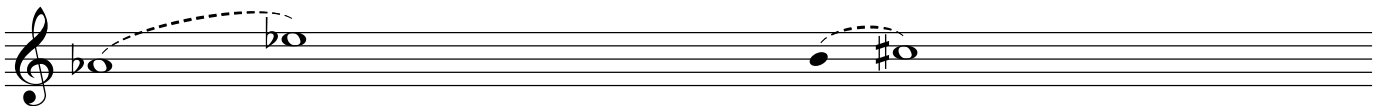
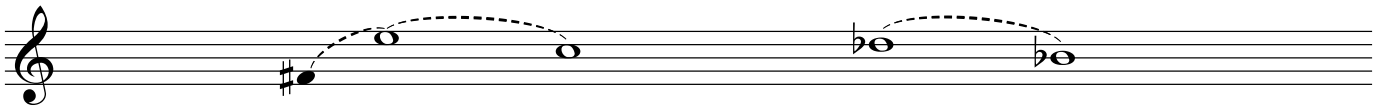
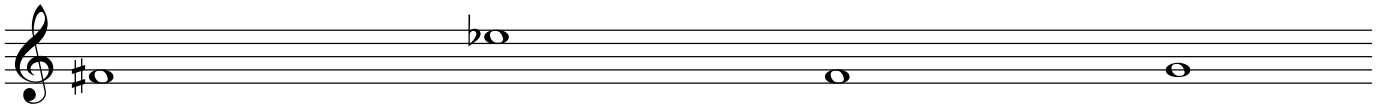
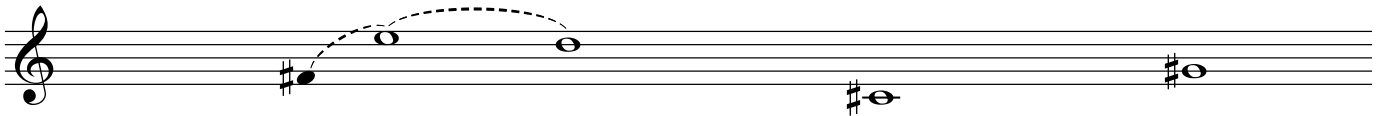
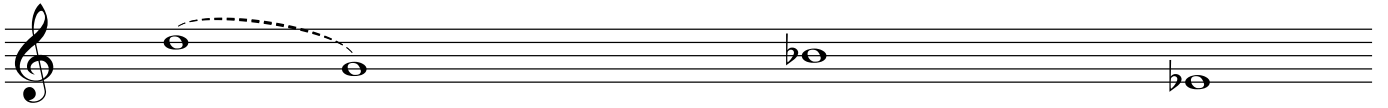
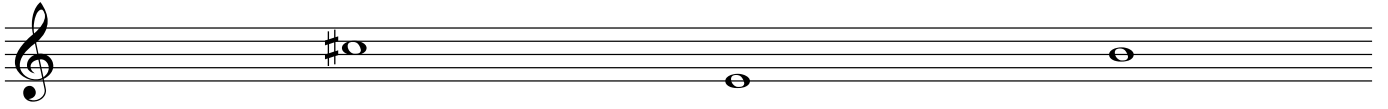
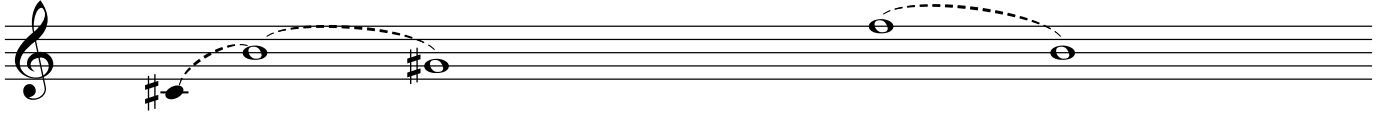
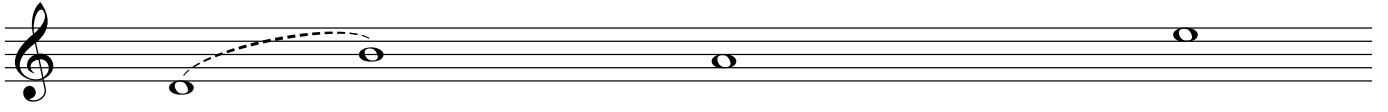


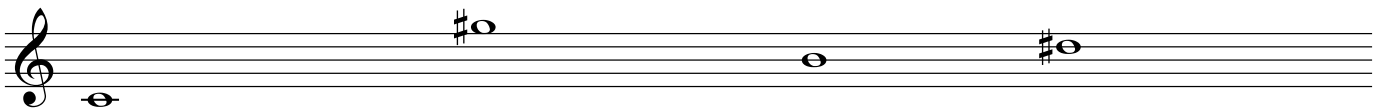
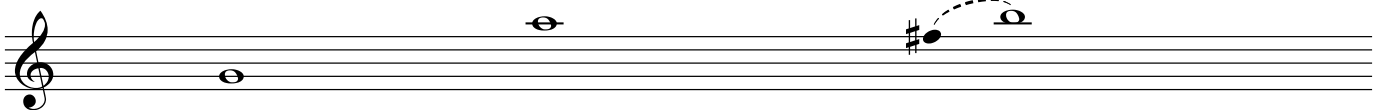
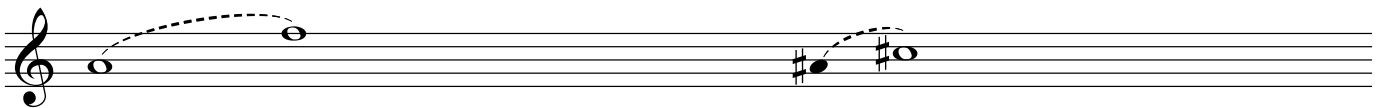
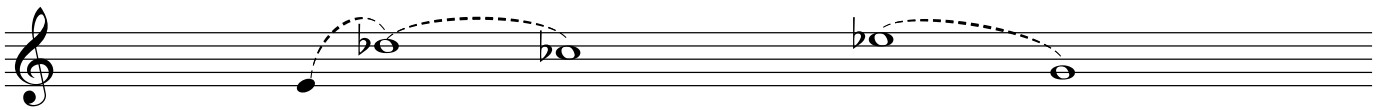
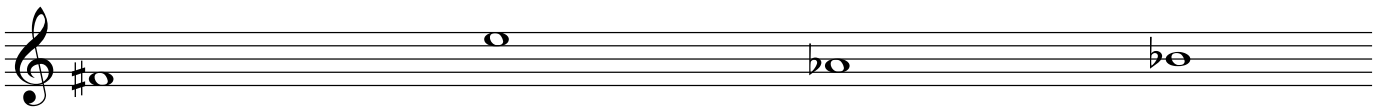
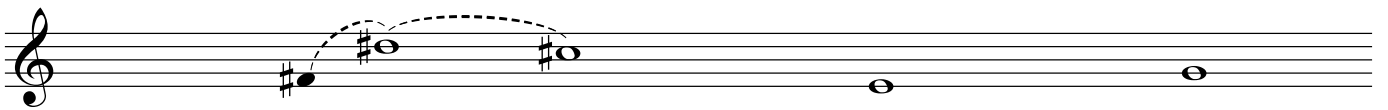
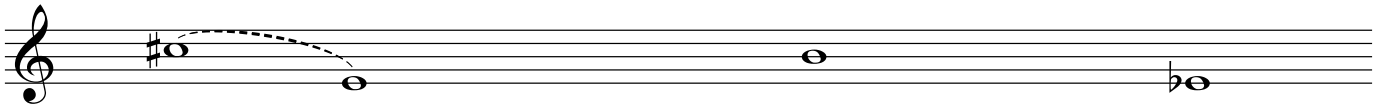
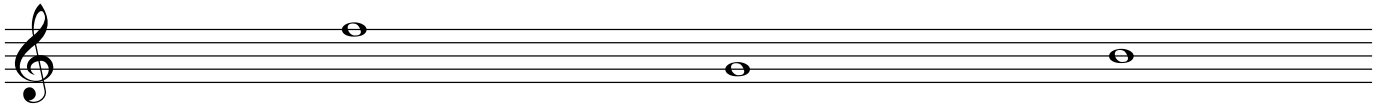
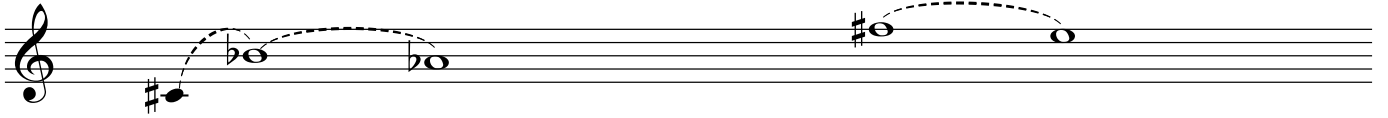


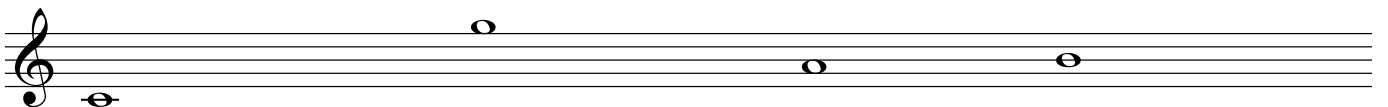
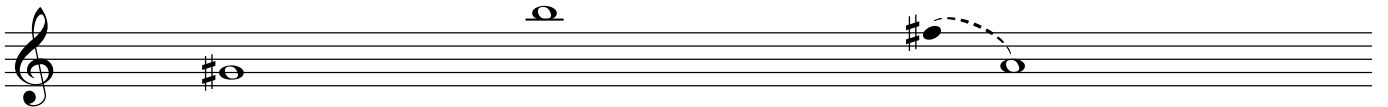
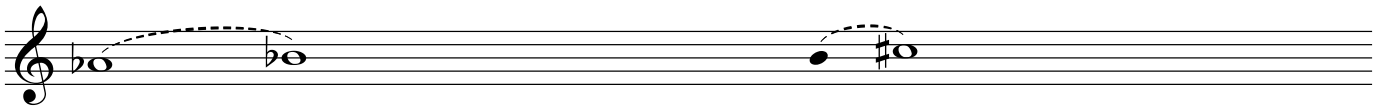
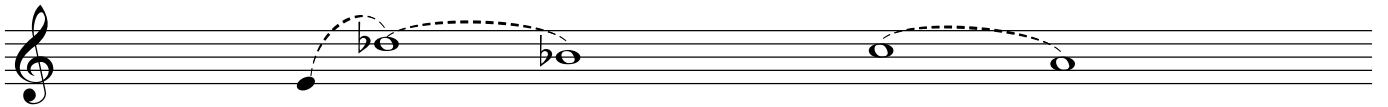
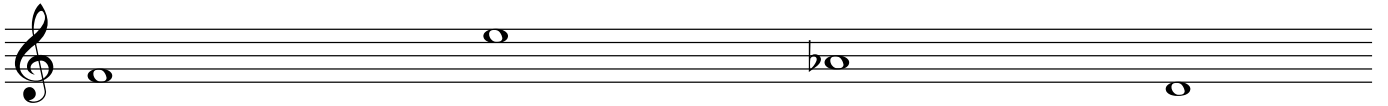
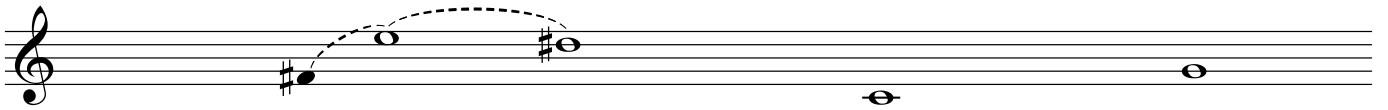
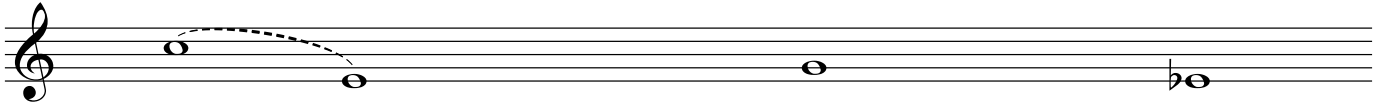
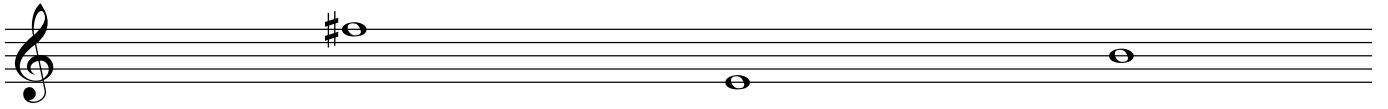
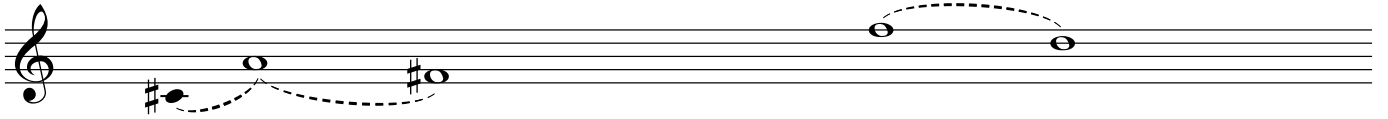
XII



XIII

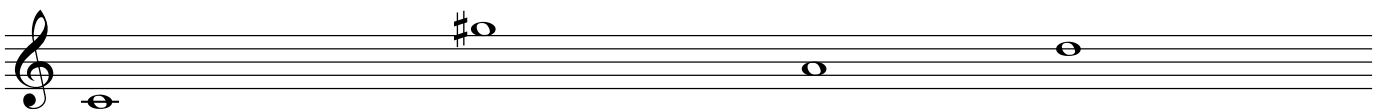
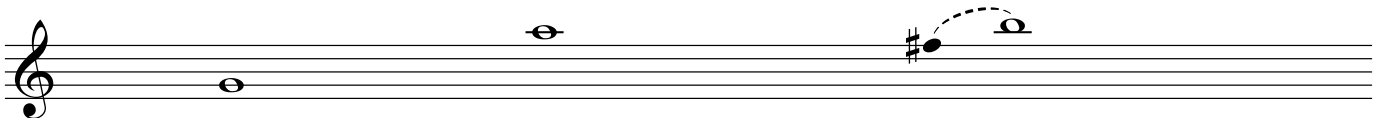
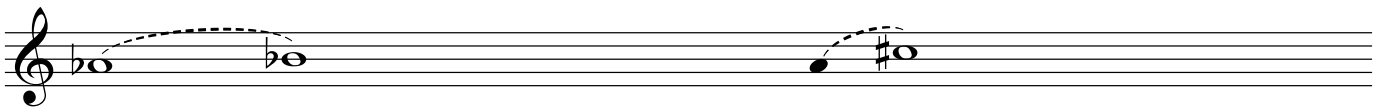
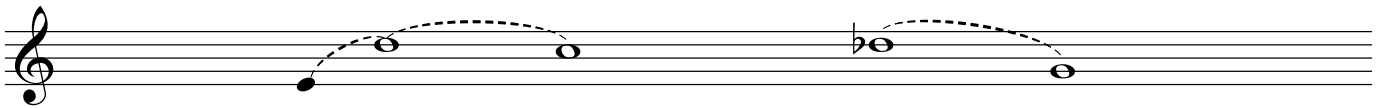
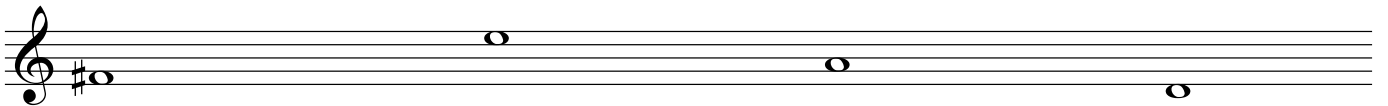
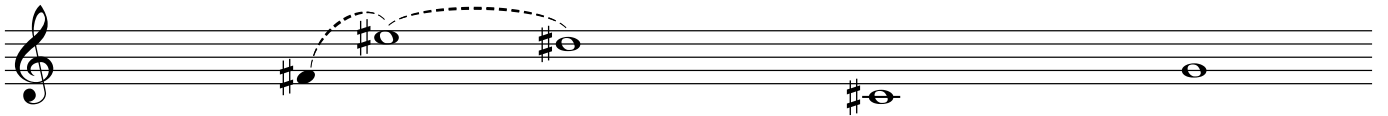
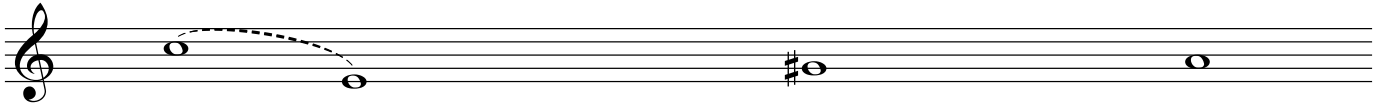
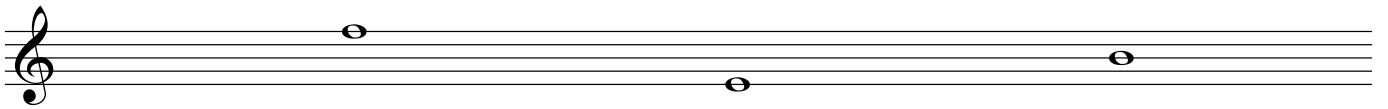
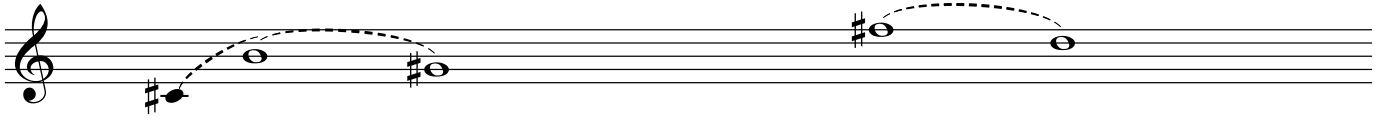
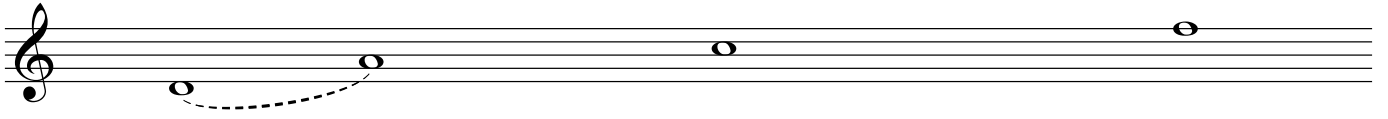




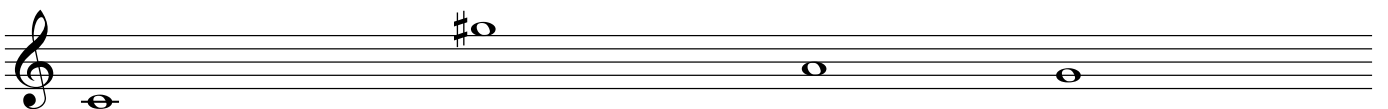
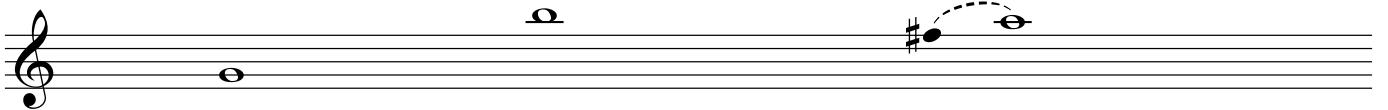
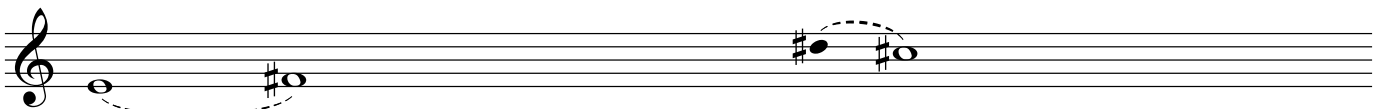
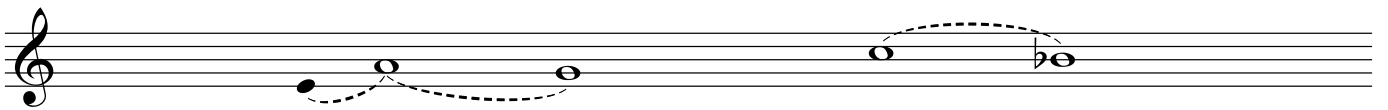
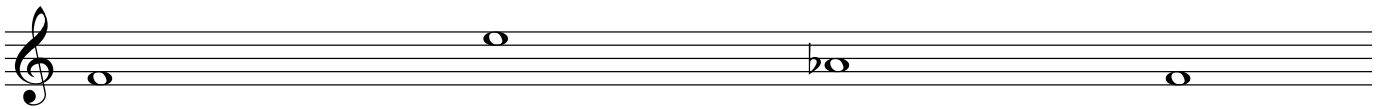
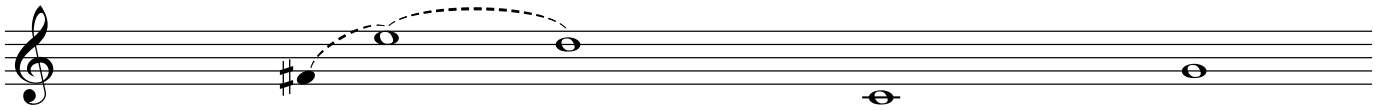
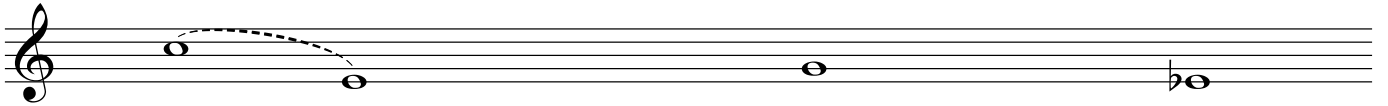
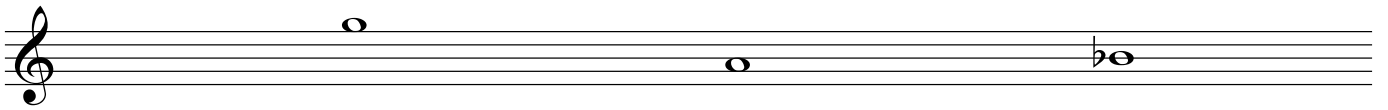
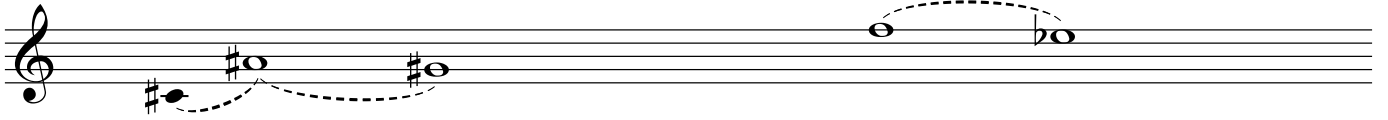
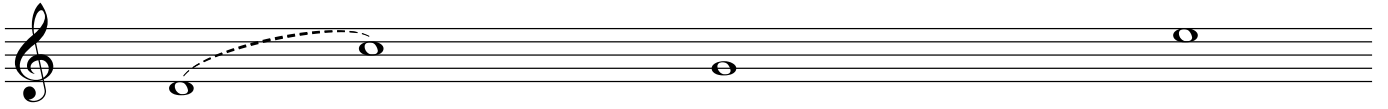


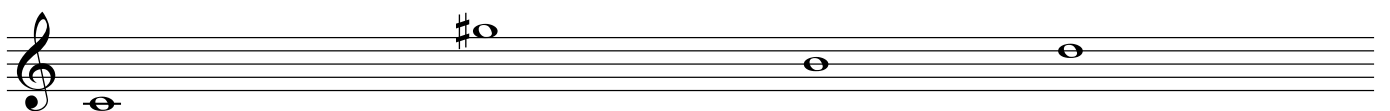
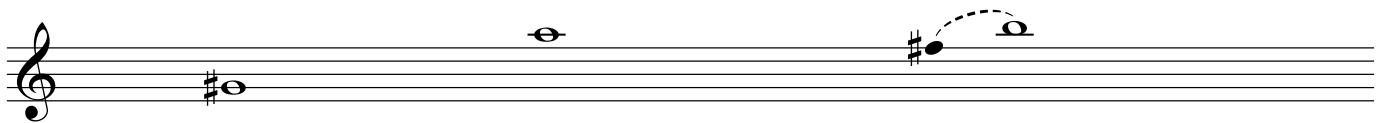
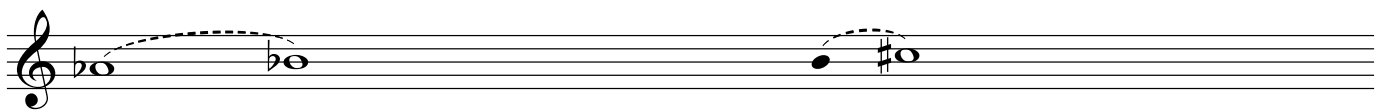
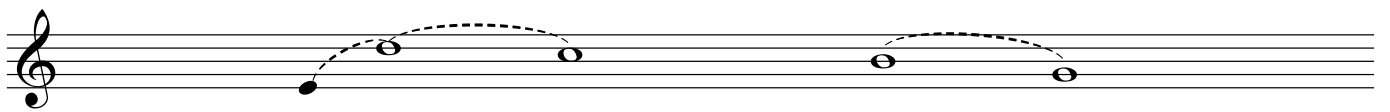
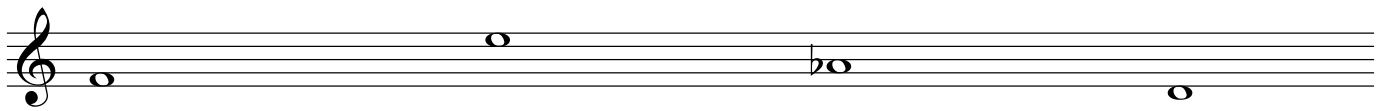
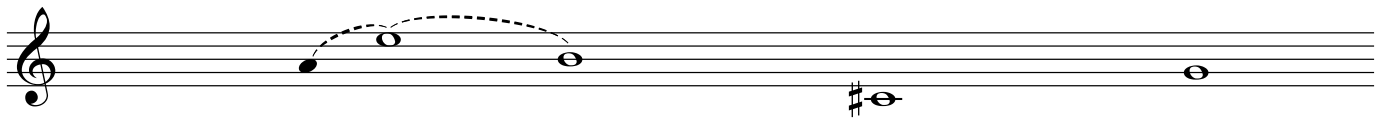
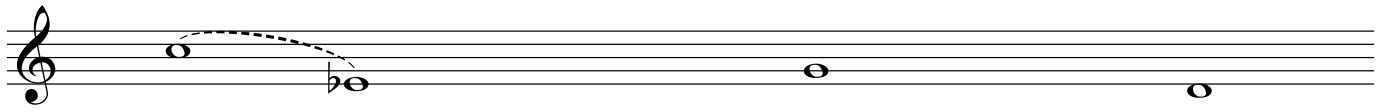
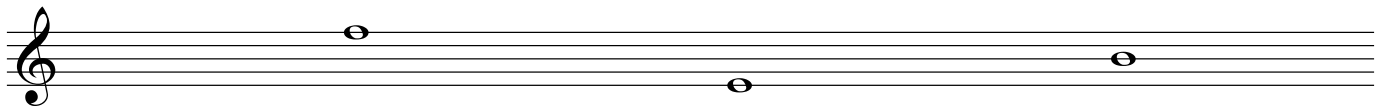
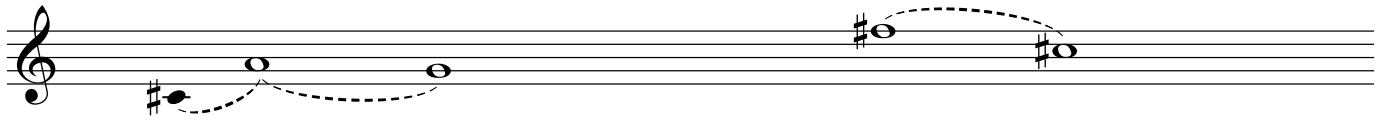
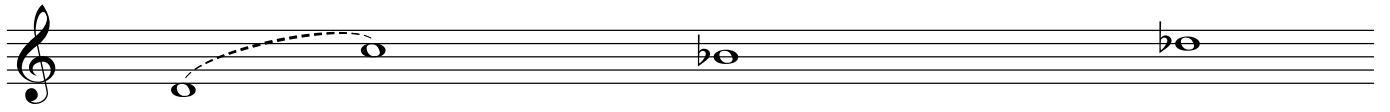
The image displays ten staves of musical notation, each beginning with a treble clef. The notation includes various note values, accidentals, and slurs. The notes are as follows:

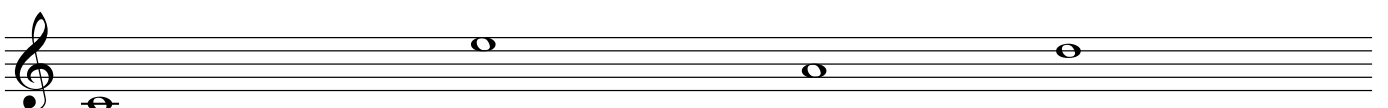
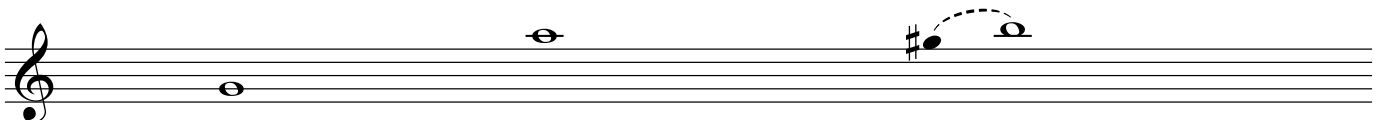
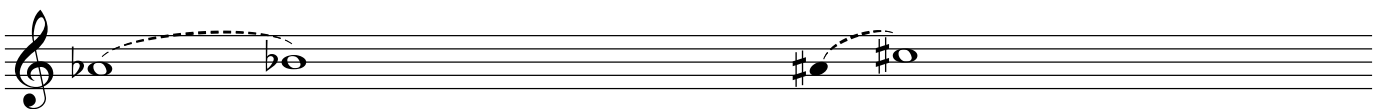
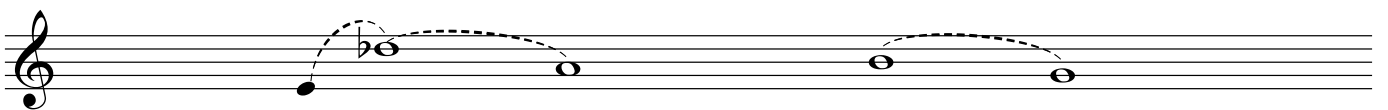
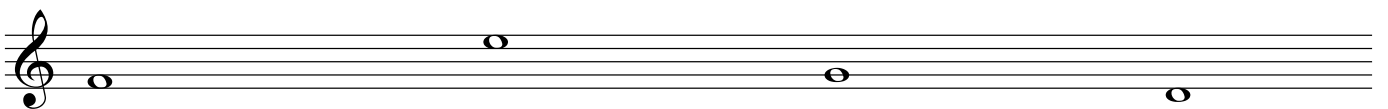
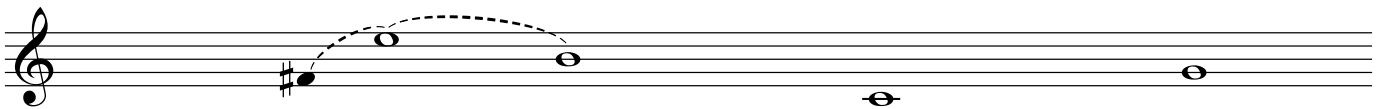
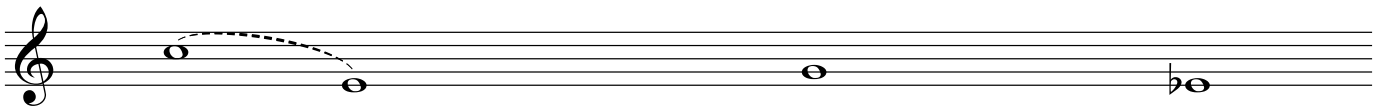
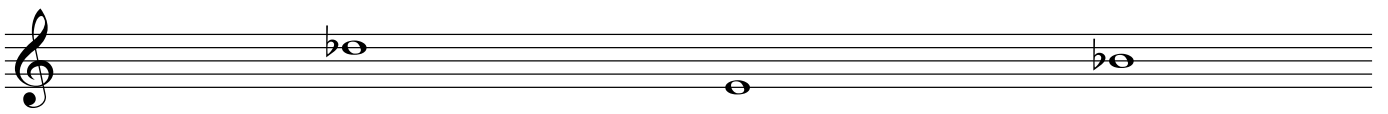
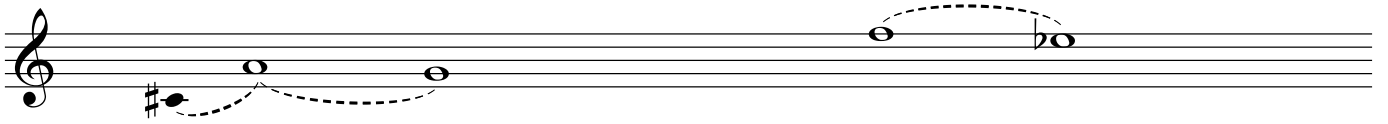
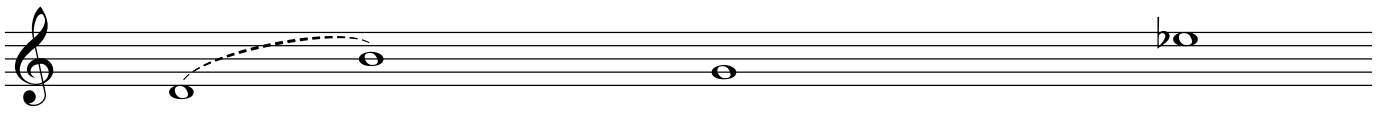
- Staff 1: Quarter note G4, quarter note A4, quarter note B4, quarter note C5, quarter note B4, quarter note A4, quarter note G4.
- Staff 2: Quarter note G4, quarter note A4, quarter note B4, quarter note C5, quarter note B4, quarter note A4, quarter note G4.
- Staff 3: Quarter note G4, quarter note A4, quarter note B4, quarter note C5, quarter note B4, quarter note A4, quarter note G4.
- Staff 4: Quarter note G4, quarter note A4, quarter note B4, quarter note C5, quarter note B4, quarter note A4, quarter note G4.
- Staff 5: Quarter note G4, quarter note A4, quarter note B4, quarter note C5, quarter note B4, quarter note A4, quarter note G4.
- Staff 6: Quarter note G4, quarter note A4, quarter note B4, quarter note C5, quarter note B4, quarter note A4, quarter note G4.
- Staff 7: Quarter note G4, quarter note A4, quarter note B4, quarter note C5, quarter note B4, quarter note A4, quarter note G4.
- Staff 8: Quarter note G4, quarter note A4, quarter note B4, quarter note C5, quarter note B4, quarter note A4, quarter note G4.
- Staff 9: Quarter note G4, quarter note A4, quarter note B4, quarter note C5, quarter note B4, quarter note A4, quarter note G4.
- Staff 10: Quarter note G4, quarter note A4, quarter note B4, quarter note C5, quarter note B4, quarter note A4, quarter note G4.



XVIII







The image displays ten staves of musical notation in treble clef. The notes and accidentals are as follows:

- Staff 1: A slur over two notes (G4, A4), followed by Bb4 and Cb5.
- Staff 2: A slur over three notes (F#4, G4, A4), followed by a slur over two notes (B4, C5).
- Staff 3: D#4, E4, G4, A4.
- Staff 4: A slur over two notes (G4, A4), followed by B4 and Cb5.
- Staff 5: A slur over three notes (F#4, G4, A4), followed by Bb4 and C5.
- Staff 6: D4, E4, F#4, G#4.
- Staff 7: A slur over two notes (F#4, G4), followed by a slur over two notes (A4, B4).
- Staff 8: Bb4, Cb5, D4, E4.
- Staff 9: D4, E4, F#4, G4.
- Staff 10: D4, E4, F#4, G4.